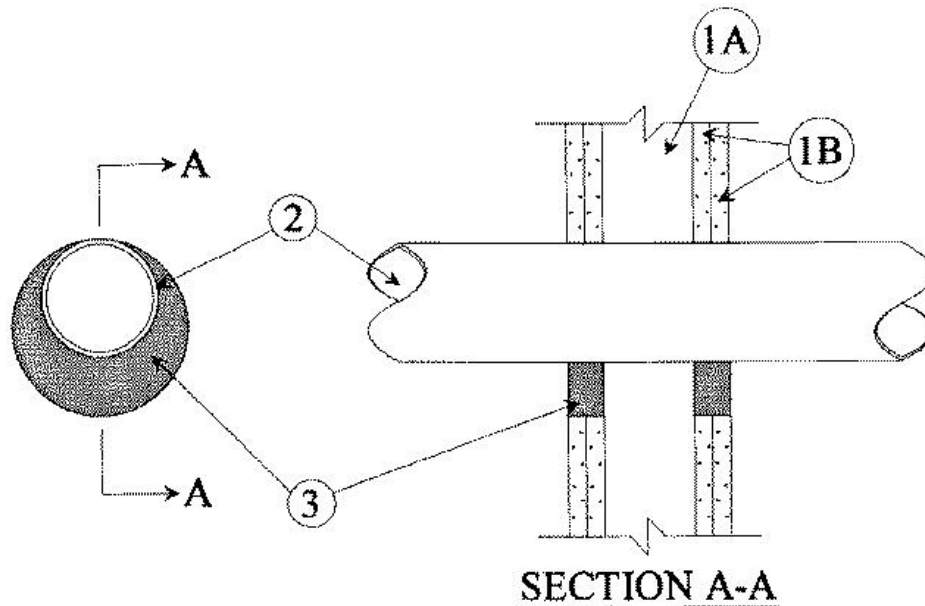


F Rating — 2 Hr  
 T Ratings — 0 & 1/4 Hr (See Item 2)



**1. Wall Assembly** — The fire-rated gypsum wallboard/stud wall assembly shall be constructed of the materials and in the manner specified in the individual U300 or U400 Series Wall and Partition Designs in the UL Fire Resistance Directory and shall include the following construction features:

**A. Studs** — Wall framing may consist of either wood studs or steel channel studs. Wood studs to consist of nom 2 by 4 in. lumber spaced 16 in. OC. Steel studs to be min 2-1/2 in. wide and spaced max 24 in. OC.

**B. Gypsum Board\*** — Two layers of nom 5/8 in. thick gypsum wallboard, as specified in the individual Wall and Partition Design. Max diam of opening is 6 in.

**2. Through-Penetrant** — One metallic pipe, conduit or tubing installed either concentrically or eccentrically within the firestop system. The annular space shall be min 0 in. to max 1-1/2 in. Pipe, conduit or tubing to be rigidly supported on both sides of wall assembly. The following types of pipe, conduit or tubing may be used:

**A. Steel Pipe** — Nom 4 in. diam (or smaller) Schedule 5 (or heavier) steel pipe.

**B. Conduit** — Nom 4 in. diam (or smaller) steel electrical metallic tubing (EMT) or steel conduit.

**C. Copper Tubing** — Nom 3 in. diam (or smaller) Type L (or heavier) copper tubing.

**D. Copper Pipe** — Nom 3 in. diam (or smaller) Regular (or heavier) copper pipe.  
 T Rating is 1/4 hr for Items A and B, 0 hr for Items C and D.

**3. Fill, Void or Cavity Material\* — Caulk** — Min 1-1/4 in. thickness of fill material applied within the annulus, flush with both surfaces of wall.

**RECTORSEAL** — [Metacaulk 835+](#)

\*,+ Indicates such products shall bear the UL or cUL Certification Mark for jurisdictions employing the UL or cUL Certification (such as Canada), respectively.

Reprinted from the Online Certifications Directory with permission from UL. ©UL LLC