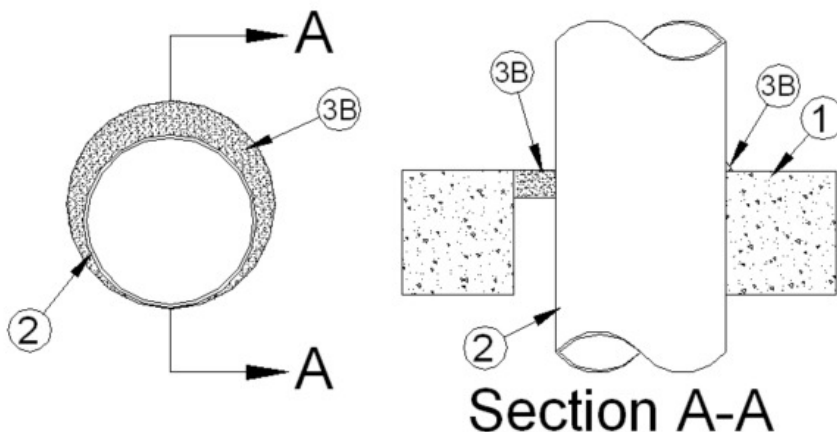


F Rating — 2 Hr  
T Rating — 0 Hr



1. **Floor or Wall Assembly** — Min 4-1/2 in. (114 mm) thick reinforced lightweight or normal weight (100-150 pcf or 1600-2400 kg/m<sup>3</sup>) concrete. Floor may also be constructed of any min 6 in. (152 mm) thick UL Classified hollow-core **Precast Concrete Units**\*. Wall may also be constructed of any UL Classified **Concrete Blocks**\*. Max diam of opening is 14 in. (356 mm).

See **Concrete Blocks (CAZT)** and **Precast Concrete Units (CFTV)** categories in the Fire Resistance Directory for names of manufacturers.

2. **Through Penetrants** — One metallic pipe, conduit or tubing to be installed within the firestop system. Pipe, conduit or tubing to be rigidly supported on both sides of floor or wall assembly. The annular space shall be min 0 in. (point contact) to max 3-1/4 in. (83 mm) for items 3A, 3B and 3E or min 0 in. (point contact) to max 1-7/8 in. (48 mm) for items 3C and 3D. The following types and sizes of pipes, conduits or tubing may be used:

A. **Steel Pipe** — Nom 10 in. (254 mm) diam (or smaller) Schedule 20 (or heavier) steel pipe.

B. **Iron Pipe** — Nom 6 in. (152 mm) diam (or smaller) cast or ductile iron pipe.

C. **Copper Tubing** — Nom 4 in. (102 mm) Type L (or heavier) copper tubing.

D. **Copper Pipe** — Nom 4 in. (102 mm) Regular (or heavier) copper pipe.

E. **Conduit** — Nom 6 in. (152 mm) diam (or smaller) rigid steel conduit or nom 4 in. (102 mm) diam (or smaller) steel electrical metallic tubing.

3. **Firestop System** — The firestop system shall consist of the following:

A. **Packing Material** — (Optional, not shown) — Polyethylene backer rod firmly packed into annular space as a permanent form. Packing material to be recessed from surface of top or bottom of floor or both sides of wall to accommodate the fill material (Item 3B).

B. **Fill, Void or Cavity Material\* — Sealant** — Min 1 in. (25 mm) depth of fill material applied within annulus, flush with either the bottom or top surface of solid concrete floor or both surfaces of wall assembly and hollow-core floor assemblies. Min 1/4 in. (6 mm) bead of sealant applied at point contact on applicable surfaces.

**RECTORSEAL** — [Metacaulk 1000](#)

\*,+ Indicates such products shall bear the UL or cUL Certification Mark for jurisdictions employing the UL or cUL Certification (such as Canada), respectively.

Reprinted from the Online Certifications Directory with permission from UL. ©UL LLC