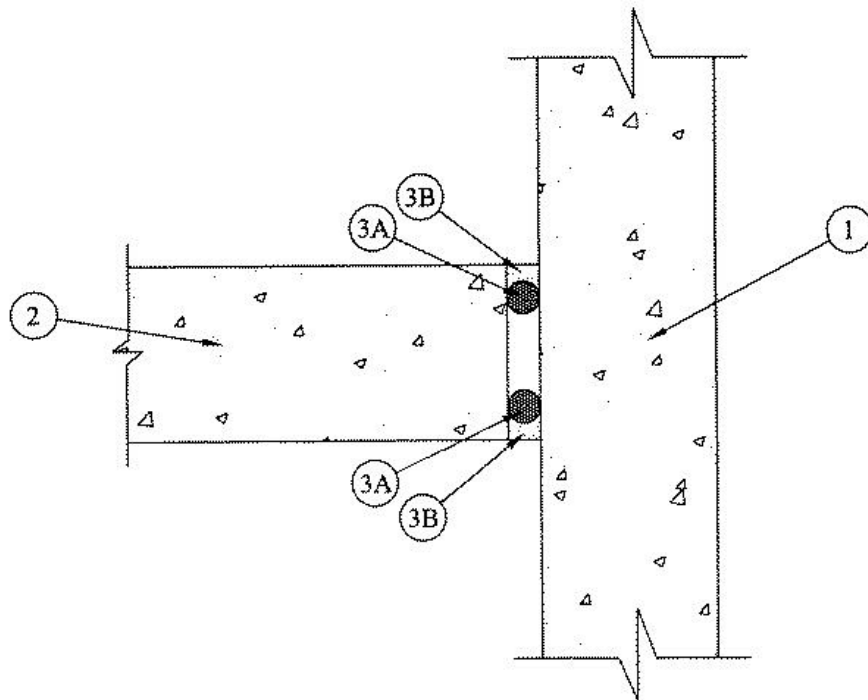


ANSI/UL2079	CAN/ULC S115
Assembly Rating — 2 Hr	F Rating — 2 Hr
Nominal Joint Width - 1 In.	FT Rating — 2 Hr
Class II Movement Capabilities -25% Compression or Extension	FH Rating — 2 Hr
	FTH Rating — 2 Hr
	Nominal Joint Width - 1 In.
	Class II Movement Capabilities -25% Compression or Extension



1. Wall Assembly — Min 4-1/2 in. thick reinforced lightweight or normal weight (100 -150 pcf) structural concrete. Wall may also be constructed of any UL Classified **Concrete Blocks***.

See **Concrete Blocks** (CAZT) category in the Fire Resistance Directory for names of manufacturers.

2 Floor Assembly — Min 4-1/2 in. thick reinforced lightweight or normal weight (100-150 pcf) structural concrete.

3. Joint System — **Max separation between edge of floor and face of wall (at time of installation of joint system) is 1 in. The joint system is designed to accommodate a max 25 percent compression or extension from it's installed width.** The joint system shall consist of the following:

A. **Packing Material** — (Optional) Open or closed cell polyurethane foam backer rod used as a form to prevent the leakage of fill material. Packing material to be recessed from both surfaces of the floor as required to accommodate the required thickness of fill material.

B. **Fill, Void or Cavity Material* - Sealant** — Min 1/2 in. thickness of fill material applied within the joint, flush with both surfaces of floor.

RECTORSEAL — FS 900+ Sealant, **Metacaulk MC 150+**, Biostop **BF 150+**

*,+ Indicates such products shall bear the UL or cUL Certification Mark for jurisdictions employing the UL or cUL Certification (such as Canada), respectively.

Reprinted from the Online Certifications Directory with permission from UL. ©UL LLC