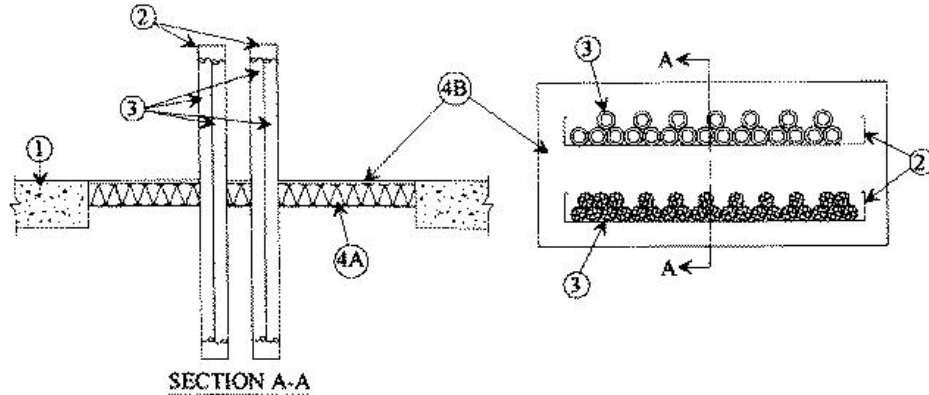


F Rating — 2 Hr
 T Rating — 0 Hr
 L Rating at Ambient — Less Than 1 CFM/sq ft (See Items 2 and 3)
 L Rating at 400 F — 2 CFM/sq ft (See Items 2 and 3)
 W Rating — Class 1 (See Items 2 and 3)



1. **Floor or Wall Assembly** — Min 4-1/2 in. thick reinforced lightweight or normal weight (100-150 pcf) concrete. Wall may also be constructed of any UL Classified **Concrete Blocks***. Max area of opening is 960 sq in. with max dimension of 40 in. See **Concrete Blocks** (CAZT) category in the Fire Resistance Directory for names of manufacturers.

2. **Cable Trays** — Max 36 in. wide by max 3-1/2 in. deep open-ladder or solid-back cable trays with channel-shaped side rails formed of min 0.050 in. thick steel or min 0.091 in. thick aluminum. Cable trays are provided with min 0.050 in. thick steel or min 0.091 in. thick aluminum. Rungs spaced a max of 12 in. apart, or a min 0.050 in. thick steel solid back. **L Ratings and W Rating apply only when open-ladder cable tray is used.** Two cable trays are permitted per opening. The annular space between the cable tray and the periphery of the opening shall be min 3/4 in. to max 9 in. The annular space between cable trays shall be min 5-3/4 in. to max 7 in. Cable tray to be rigidly supported on both sides of floor or wall assembly.

3. **Cables** — Aggregate cross-sectional area of cables in cable trays to be max 40 percent of the cross-sectional area of the cable tray based on a max 3.0 in. cable loading depth within the cable tray. **L Ratings and W Rating apply only when the min separation between the cables and between the cables and cable tray side rails is equal to or greater than 1/8 in. (3 mm).** Any combination of the following types and sizes of copper conductor cables may be used:

- A. Max 4/C No. 2 AWG cable with XLPE jacket and insulation.
- B. Max 1/C 500 kcmil cable with cross-linked polyethylene (XLPE) jacket and insulation.

4. **Firestop System** — The firestop system shall consist of the following:

A. **Packing Material** — Min 3-3/4 in. thickness of min 4.5 pcf mineral wool batt insulation tightly packed into the opening as a permanent form. Packing material to be recessed from top surface of floor or from both surfaces of wall as required to accommodate the required thickness of fill material.

B. **Fill, Void or Cavity Material* — Caulk** — Min 3/8 in. thickness of fill material applied within the annulus, flush with top surface of floor or with both surfaces of wall.

RECTORSEAL — [Metacaulk 835+](#)

*,+ Indicates such products shall bear the UL or cUL Certification Mark for jurisdictions employing the UL or cUL Certification (such as Canada), respectively.

Reprinted from the Online Certifications Directory with permission from UL. ©UL LLC