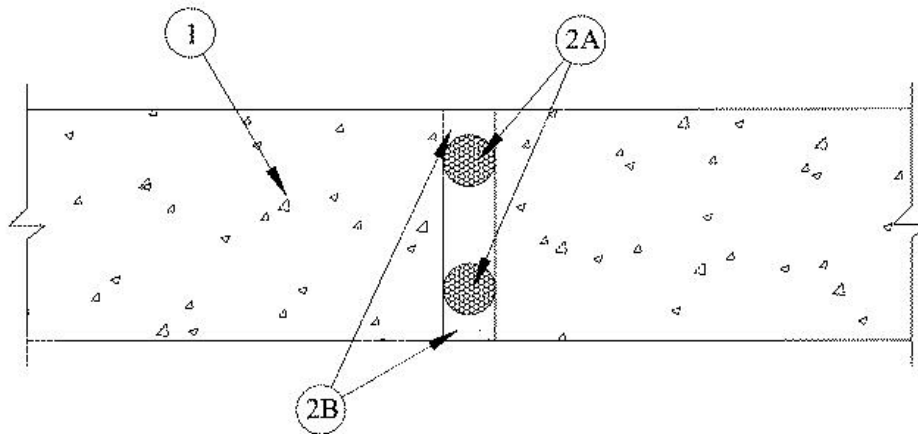


ANSI/UL2079	CAN/ULC S115
Assembly Rating — 2 Hr	F Rating — 2 Hr
Nominal Joint Width - 1 In.	FT Rating — 2 Hr
Class II Movement Capabilities - +6.25% Extension and -12.5% Compression or 12.5% Compression or Extension (See Item 2)	FH Rating — 2 Hr
	FTH Rating — 2 Hr
	Nominal Joint Width - 25 mm.
	Class II Movement Capabilities - +6.25% Extension and -12.5% Compression or 12.5% Compression or Extension (See Item 2)



1. **Wall Assembly** — Min 4-1/2 in. (114 mm) thick reinforced lightweight or normal weight (100 -150 pcf / 1600-2400 kg/m3) structural concrete. Wall may also be constructed of any UL Classified **Concrete Blocks***. See **Concrete Blocks** (CAZT) category in the Fire Resistance Directory for names of manufacturers.

2. **Joint System** — Max width of joint (at time of installation of joint system) is 1 in. (25.4 mm). The movement capabilities of the joint system is dependent the type and thickness of fill material as described in the table below . The joint system shall consist of the following:

A. **Packing Material** — (Optional) Open or closed cell polyurethane foam backer rod used as a form to prevent the leakage of fill material. Packing material to be recessed from both surfaces of the wall as required to accommodate the required thickness of fill material.

B. **Fill, Void or Cavity Material* - Sealant** — Fill material applied within the joint, flush with both surfaces of wall. The thickness of fill material is dependent upon the type of fill material and percent compression and extension of the joint system as shown in the table below.

RECTORSEAL — FS 900+ Sealant, [Metacaulk MC 150+](#), Biostop BF [150+](#) [Metacaulk 1000 Caulk](#), [Metacaulk 1200 Spray](#), [Metacaulk 1200 Caulk Grade](#)

Fill, Void, or Cavity Material	Material thickness, in. (mm)	Percent compression and/or extension
Metacaulk MC 150+ , Metacaulk 1000 Caulk , Metacaulk 1200 Spray , Metacaulk 1200 Caulk Grade	1/4 (6)	+6.25% extension and -12.5% compression
FS 900+ Sealant, Metacaulk MC 150+ , Biostop BF 150+	1/2 (13)	12.5 % compression and extension



* Indicates such products shall bear the UL or cUL Certification Mark for jurisdictions employing the UL or cUL Certification (such as Canada), respectively.