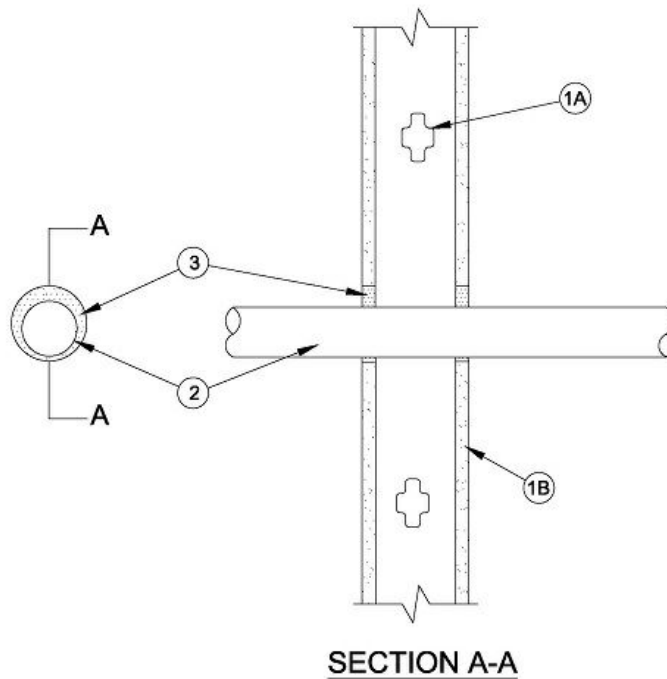


October 5, 2021

ANSI/UL1479 (ASTM E814)	CAN/ULC S115
F Rating — 1 Hr	F Rating — 1 Hr
T Rating — 3/4 Hr	FT Rating — 3/4 Hr
	FH Rating — 1 Hr
	FTH Rating — 3/4 Hr



1. Wall Assembly —The 1 hr fire-rated gypsum board/stud wall assembly shall be constructed of the materials and in the manner specified in the individual U300, U400, V400 or W400 series Wall and Partition Design in the UL Fire Resistance Directory and shall include the following construction features:

A. Studs —Wall framing may consist of either wood studs or steel channel studs. Wood studs to consist of nom 2 by 4 in. (51 by 102 mm) lumber spaced 16 in. (406 mm) OC. Steel studs to be min 3-5/8 in. (92 mm) wide and spaced max 24 in. (610 mm) OC.

B. Gypsum Board* —Min 5/8 in. (16 mm) thick, 4 ft (1.2 m) wide with square or tapered edges as specified in the individual Wall and Partition Design. Max diam of opening is 4 in. (102 mm).

2. Through Penetrating Product* — Corrugated Medical Tubing (CMT) — One nom 2 in. (51 mm) diam (or smaller) semi-rigid copper alloy medical tubing to be installed either concentrically or eccentrically within the firestop system. The annular space shall be min 1/4 in. (6 mm) to max 1-1/8 in. (28.6 mm). Tubing to be rigidly supported on both sides of wall assembly.

OMEGA FLEX INC — MediTrac® Corrugated Medical Tubing

3. Firestop System — The firestop system shall consist of the following:

A. Fill, Void or Cavity Material* — Caulk — Min 5/8 in. (16 mm) thickness of fill material applied within the annulus, flush with both surfaces of wall.

RECTORSEAL — [Metacaulk 1000](#)



* Indicates such products shall bear the UL or cUL Certification Mark for jurisdictions employing the UL or cUL Certification (such as Canada), respectively.