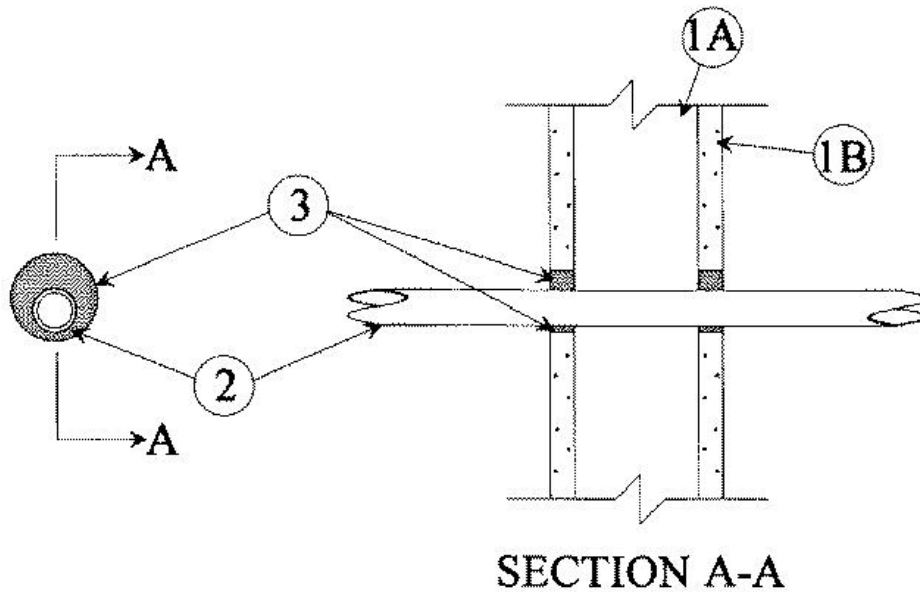


F Rating — 1 Hr  
T Rating — 1 Hr



**1. Wall Assembly** — The fire-rated gypsum wallboard/stud wall assembly shall be constructed of the materials and in the manner specified in the individual U300 or U400 Series Wall and Partition Designs in the UL Fire Resistance Directory and shall include the following construction features:

**A. Studs** — Wall framing may consist of either wood studs or steel channel studs. Wood studs to consist of nom 2 by 4 in. lumber spaced 16 in. OC. Steel studs to be min 2-1/2 in. wide and spaced max 24 in. OC.

**B. Gypsum Board\*** — One layer of 5/8 in. thick gypsum wallboard, as specified in the individual Wall and Partition Design. Max diam of opening is 2-1/4 in.

**2. Through-Penetrants** — One nonmetallic pipe for use in closed (process or supply) or vented (drain, waste or vent) piping systems, installed either concentrically or eccentrically within the firestop system. The annular space between the pipe and the edge of the opening shall be min 3/8 in. to max 3/4 in. Pipe to be rigidly supported on both sides of wall assembly. The following types and sizes of nonmetallic pipes may be used:

**A. Chlorinated Polyvinyl Chloride (CPVC) Pipe** — Nom 3/4 in. diam (or smaller) SDR17 CPVC pipe.

**B. Polyvinyl Chloride (PVC) Pipe** — Nom 3/4 in. diam (or smaller) Schedule 40 solid core PVC pipe.

**3. Fill, Void or Cavity Material\*** — **Caulk** — Min thickness of 5/8 in. of fill material applied within annulus between pipe or conduit and periphery of the opening, flush with both surfaces of wall assembly.

**RECTORSEAL** — [Metacaulk 835+](#)

\*,+ Indicates such products shall bear the UL or cUL Certification Mark for jurisdictions employing the UL or cUL Certification (such as Canada), respectively.

Reprinted from the Online Certifications Directory with permission from UL. ©UL LLC