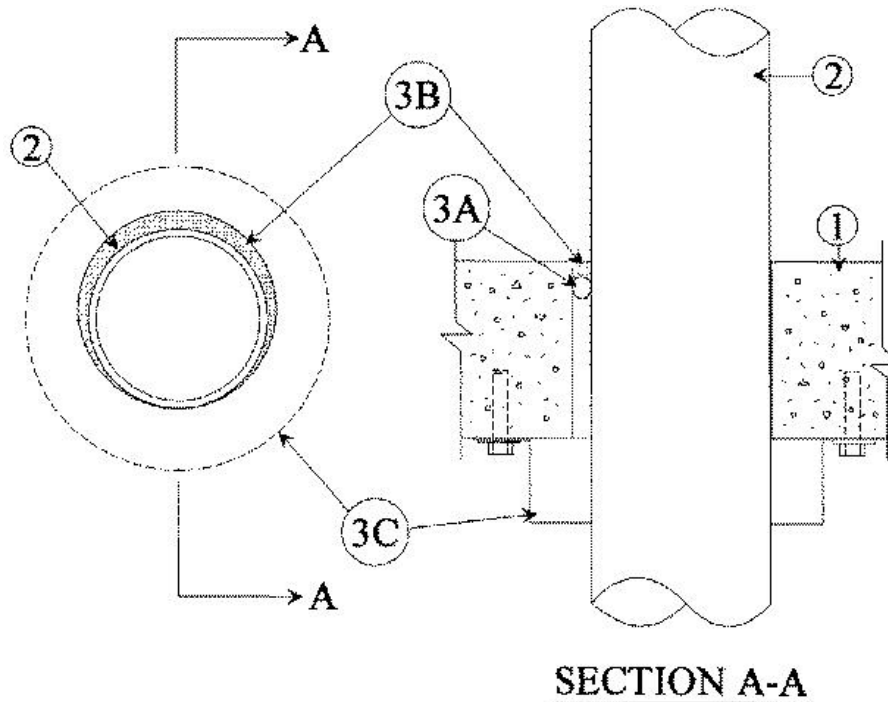


F Rating — 2 Hr  
T Rating — 2 Hr  
W Rating - Class 1 (See Item 3)



**1. Floor or Wall Assembly** — Min 4-1/2 in. thick reinforced lightweight or normal weight (100-150 pcf) concrete. Wall may also be constructed of any UL Classified **Concrete Blocks\***. Floor may also be constructed of any min 6 in. thick UL Classified hollow-core **Precast Concrete Units\***. Max diam of opening is 5 in. See **Concrete Blocks (CAZT)** and **Precast Concrete Units (CFTV)** categories in the Fire Resistance Directory for names of manufacturers.

**2. Nonmetallic Pipe** — Nom 4 in. diam Schedule 40 Fire Retardant Polypropylene (FRPP) pipe for use in closed (process or supply) or vented (drain, waste or vent) piping systems. One pipe to be installed either concentrically or eccentrically within the firestop system. The annular space shall be min 0 in. to max 1/2 in. Pipe to be rigidly supported on both sides of floor or wall assembly.

**3. Firestop System** — The firestop system shall consist of the following:

**A. Packing Material** — Foam backer rod firmly packed into opening as a permanent form. Packing material to be recessed from top surface of floor or from both surfaces of wall as required to accommodate the required thickness of fill material.

**B. Fill, Void or Cavity Material\* — Caulk** — Min 1/2 in. thickness of fill material applied within the annulus, flush with top surface of floor or with both surfaces of wall.

**RECTORSEAL** — [Metacaulk 1000](#), [Metacaulk 1200](#)

W-Rating only applies when [Metacaulk 1200](#) is used.

**C. Firestop Device\*** — Galv steel collar lined with an intumescent material sized to fit specific diam of the through penetrant. Device to be installed around through penetrant in accordance with accompanying installation instructions. Device incorporates three anchor tabs for securement to underside of the concrete floor by means of 1/4 in. diam by 1-1/4 in. long steel expansion bolts in conjunction with min 3/4 in. diam washers. In walls, collars are installed on each side of wall.

**RECTORSEAL** — [Metacaulk Pipe Collar](#)

\*,+ Indicates such products shall bear the UL or cUL Certification Mark for jurisdictions employing the UL or cUL Certification (such as Canada), respectively.

Reprinted from the Online Certifications Directory with permission from UL. ©UL LLC