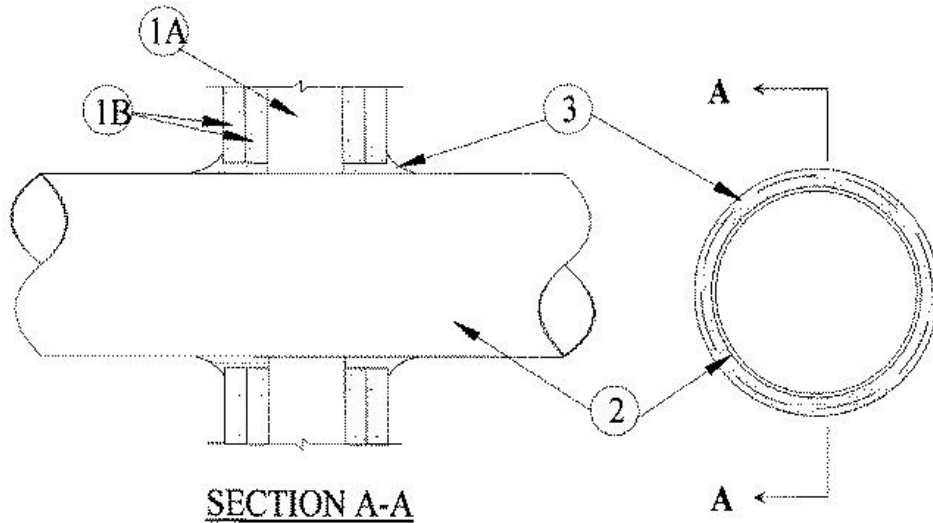


F Ratings — 1 and 2 Hr
 T Rating — 0 hr



1. Wall Assembly — The fire-rated gypsum wallboard/stud wall assembly shall be constructed of the materials and in the manner specified in the individual U300 or U400 Series Wall and Partition Designs in the UL Fire Resistance Directory and shall include the following construction features:

A. **Studs** — Wall framing may consist of either wood studs or steel channel studs. Wood studs to consist of nom 2 by 4 in. lumber spaced 16 in. OC. Steel studs to be min 2-1/2 in. wide and spaced max 24 in. OC.

B. **Gypsum Board*** — 5/8 in. thick, 4 ft wide with square or tapered edge. The gypsum wallboard type, thickness, number of layers, fastener type and sheet orientation shall be as specified in the individual U300 or U400 Series Design in the UL Fire Resistance Directory. Max diam of opening is 13-1/4 in.

The hourly F rating of the firestop system is equal to the hourly fire rating of the wall assembly in which it is installed.

2. Through Penetrants — One metallic pipe, conduit or tubing to be installed either concentrically or eccentrically within the firestop system. Pipe, conduit or tubing to be rigidly supported on both sides of wall assembly. The annular space shall be min 0 in. to max 1/4 in. The following types and sizes of metallic pipes or tubing may be used:

A. **Steel Pipe** — Nom 12 in. diam (or smaller) Schedule 10 (or heavier) steel pipe.

B. **Iron Pipe** — Nom 12 in. diam (or smaller) cast or ductile iron pipe.

C. **Conduit** — Nom 6 in. diam (or smaller) steel electrical metallic tubing or steel conduit.

D. **Copper Tubing** — Nom 6 in. diam (or smaller) Type L (or heavier) copper tubing.

E. **Copper Pipe** — Nom 6 in. diam (or smaller) Regular (or heavier) copper pipe.

3. Fill, Void or Cavity Material* — Caulk — Fill material to be forced into the annulus to maximum extent possible. Additional fill material to be installed such that a min 1/2 in. crown is formed around the penetrating item and lapping 1/4 in. beyond the periphery of the opening.

RECTORSEAL — [MC-150 Caulk](#)

*,+ Indicates such products shall bear the UL or cUL Certification Mark for jurisdictions employing the UL or cUL Certification (such as Canada), respectively.

Reprinted from the Online Certifications Directory with permission from UL. ©UL LLC