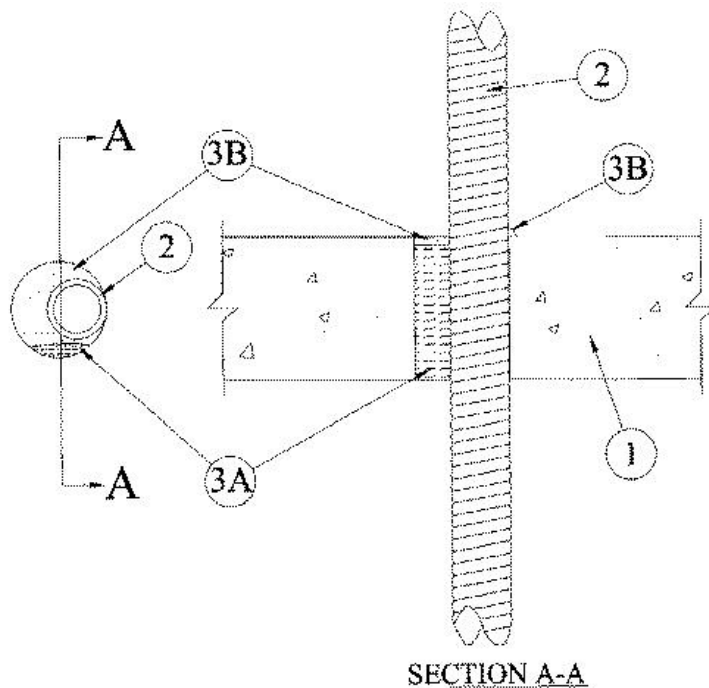


**F Rating — 3 Hr**  
**T Rating — 0 and 1-1/2 Hr (See Item 2)**



1. **Floor or Wall Assembly** — Min 4-1/2 in. thick reinforced lightweight or normal weight (100-150 pcf) concrete. Wall may also be constructed of any UL Classified **Concrete Blocks\***. Max diam of opening is 3 in.

See **Concrete Blocks** (CAZT) category in the Fire Resistance Directory for names of manufacturers.

2. **Through Penetrant** — One **Flexible Metal Conduit+** to be installed either eccentrically or concentrically within the firestop system. The annular space shall be min 0 in. (point contact) to max 1-1/8 in. Conduit to be rigidly supported on both sides of floor or wall assembly. The following types and sizes of conduit may be used:

A. **Steel Flexible Metal Conduit** — Nom 1-1/2 in. diam (or smaller) steel flexible metal conduit. **When steel flexible metal conduit is used, the hourly T Rating of the firestop system is 1-1/2 hr.** See **Flexible Metal Conduit** (DXUZ) category in the Electrical Construction Materials Directory for names of manufacturers.

B. **Aluminum Flexible Metal Conduit** — Nom 1-1/2 in. diam (or smaller) aluminum flexible metal conduit. **When aluminum flexible metal conduit is used, the hourly T Rating of the firestop system is 0 hr.** See **Flexible Metal Conduit** (DXUZ) category in the Electrical Construction Materials Directory for names of manufacturers.

3. **Firestop System** — The firestop system shall consist of the following:

A. **Packing Material** — Min 4-1/4 in. thickness of min 4 pcf mineral wool batt insulation firmly packed into opening as a permanent form. Packing material to be recessed from top surface of floor or from both surfaces of wall as required to accommodate the required thickness of fill material.

B. **Fill, Void or Cavity Materials\* — Caulk** — Min 1/4 in. thickness of fill material applied within the annulus, flush with top surface of floor or with both surfaces of wall. At point contact location between concrete and conduit, a min 1/4 in. diam bead of fill material shall be applied to the concrete/conduit interface on top surface of floor or both surfaces of wall.

**RECTORSEAL** — [Metacaulk 1000](#)

+ Bearing the UL Listing Mark

\*,+ Indicates such products shall bear the UL or cUL Certification Mark for jurisdictions employing the UL or cUL Certification (such as Canada), respectively.



---

Reprinted from the Online Certifications Directory with permission from UL. ©UL LLC