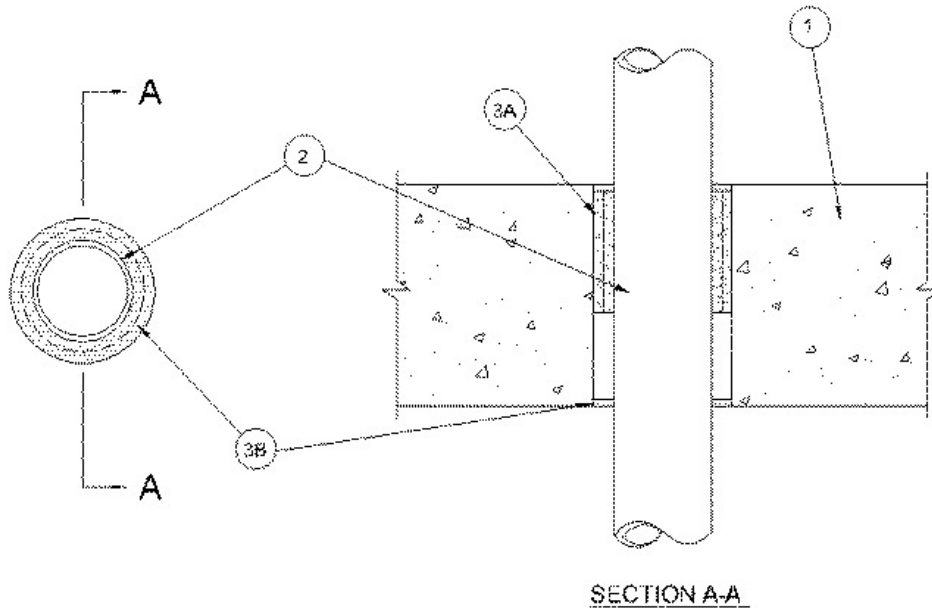


F Rating — 2 Hr  
T Ratings — 1/2 and 2 Hr (See Item 3)



**1. Floor or Wall Assembly** — Floor or Wall Assembly Lightweight or normal weight (100-150 pcf) concrete. Min thickness of solid concrete floor or wall assembly is 4-1/2 in. Floor may also be constructed of any min 8 in. thick UL Classified hollow core **Precast Concrete Units**. Wall assembly may also be constructed of any UL Classified **Concrete Blocks\***. Max diam of opening is 6 in.

See **Concrete Blocks (CAZT)** and **Precast Concrete Units (CFTV)** categories in the Fire Resistance Directory for names of manufacturers.

**2. Through Penetrants** — One nonmetallic penetrant installed concentrically within the firestop system. The annular space between pipe and periphery of opening shall be max 3/4 in. Pipe to be rigidly supported on both sides of the floor or wall assembly. The following types and sizes of non-metallic pipe may be used:

**A. Polyvinyl Chloride (PVC) Pipe** — Nom 4 in. diam (or smaller) Schedule 40 solid core or cellular core PVC pipe for use in closed (process or supply) or vented (drain, waste or vent) piping systems.

**B. Chlorinated Polyvinyl Chloride (CPVC) Pipe** — Nom 4 in. diam (or smaller) SDR 13.5 CPVC pipe for use in closed (process or supply) piping systems.

**3. Firestop System** — The details of the firestop system shall be as follows:

**A. Fill, Void or Cavity Materials\* — Wrap Strip** — One, two or three layers of nom 1/4 in. thick intumescent elastomeric material faced on one side with a plastic film, supplied in 1 or 2 in. wide strips (See Table 1). Strips tightly wrapped around nonmetallic pipe (film side exposed) with the edges butted. Butted ends in successive layers shall be offset. Wrap strip layers temporarily held in position using tape, wire or equivalent.

**RECTORSEAL** — [Metacaulk Wrap Strip](#)

**B. Fill, Void or Cavity Materials\* — Caulk** — (See Table 1) Min 1/4 in. thickness of fill material applied within annulus flush with top and bottom surfaces of floor or both sides of wall.

**RECTORSEAL** — [Metacaulk 1000](#)

Nom Diam of Pipe (In.)	No. of stacks and layers, and dimensions of Wrap Strip	Annular Space	T Rating	Location of Wrap Strip	Thickness and Location of Caulk
4 in.	1 stack of 2 layers of 1/4 in.	1/2 in.	2 Hr	Recessed 2-1/4 in. from	1/4 in. flush w/

	thick by 2 in. wide or			bottom surface of floor	both surfaces
	2 stacks of 2 layers of 1/4 in.			or 1/4 in. from both	of floor or wall
	thick by 1 in. wide			surfaces of wall	
4 in.	1 stack of 3	3/4 in.	1/2 Hr	Recessed 3 in. from bottom	1/2 in. flush w/
	layers of 1/4 in.			surface of floor or	both surfaces
	thick by 1 in. wide			1/2 in. from both surfaces of wall	of floor or wall
3, 2 or 1-1/2 in.	1 stack of 1 layer of 1/4 in.	1/4 in.	2 Hr	Recessed 2-1/4 in. from bottom	1/4 in. flush w/
	thick by 2 in. wide or			surface of floor or	both surfaces
	2 stacks of 1 layer of 1/4 in.			1/4 in. from both	of floor or wall
	thick by 1 in. wide			surfaces of wall	
3	1 stack of 2	1/2 in.	1/2 Hr	Recessed 3 in. from bottom	1/2 in. flush w/
	layers of 1/4 in.			surface of floor or	both surfaces
	thick by 1 in. wide			1/4 in. from both surfaces of wall	of floor or wall
2 or 1-1/2 in.	1 stack of 1	1/4 in.	1/2 Hr	Recessed 3 in. from	1/2 in. flush w/
	layer of 1/4 in.			bottom surface of floor or	both surfaces
	thick by 1 in. wide			1/2 in. from both surfaces of wall	of floor or wall

\*,+ Indicates such products shall bear the UL or cUL Certification Mark for jurisdictions employing the UL or cUL Certification (such as Canada), respectively.

Reprinted from the Online Certifications Directory with permission from UL. ©UL LLC