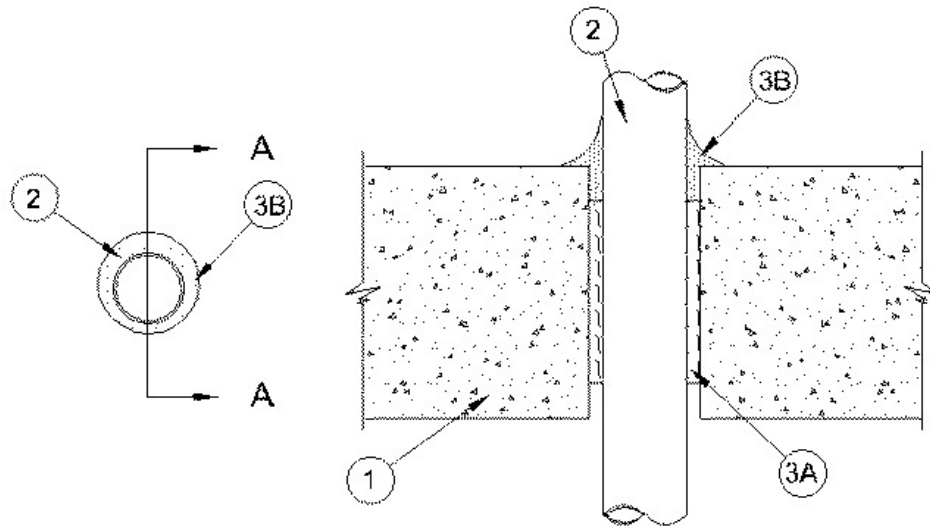


F Rating — 2 Hr  
 T Rating — 0 Hr



## SECTION A-A

1. **Floor or Wall Assembly** — Min 4-1/2 in. (114 mm) thick reinforced lightweight or normal weight (100-150 pcf or 1600-2400 kg/m<sup>3</sup>) concrete. Wall may also be constructed of any UL Classified **Concrete Blocks**\*. Max diam of opening is 7 in. (178 mm). See **Concrete Blocks** (CAZT) in Volume 1 of the Fire Resistance Directory for names of manufacturers.

2. **Through Penetrants** — One metallic pipe or conduit to be installed either concentrically or eccentrically within the firestop system. The annular space between pipes or conduits and periphery of opening shall be min 1 in. (25 mm) to max 1-1/2 in. (38 mm). Pipe or conduit to be rigidly supported on both sides of floor or wall assembly. The following types and sizes of metallic pipes or conduits may be used:

A. **Steel Pipe** — Nom 4 in. (102 mm) diam (or smaller) Schedule 10 (or heavier) steel pipe.

B. **Iron Pipe** — Nom 4 in. diam (102 mm) (or smaller) cast or ductile iron pipe.

C. **Conduit** — Nom 4 in. (102 mm) diam (or smaller) steel electrical metallic tubing or steel conduit.

3. **Firestop System** — The firestop system shall consist of the following:

A. **Packing Material** — Min 4 in. (102 mm) thickness of min 4 pcf (64 kg/m<sup>3</sup>) mineral wool batt insulation firmly packed into opening as a permanent form. Packing material to be recessed from top surface of floor or from both surfaces of wall as required to accommodate the required thickness of fill material.

B. **Fill, Void or Cavity Material\*** — **Caulk** — Min 1/4 in. (6 mm) wet thickness of fill material applied within the annulus on top surface of floor or both surfaces of wall and overlapping 1 in. (25 mm) onto pipe and concrete.

**RECTORSEAL** — [Metacaulk 1200 Spray](#), [Metacaulk 1200 Caulk Grade](#) or [Metacaulk 1200 SL](#) (floors only)

\*,+ Indicates such products shall bear the UL or cUL Certification Mark for jurisdictions employing the UL or cUL Certification (such as Canada), respectively.

Reprinted from the Online Certifications Directory with permission from UL. ©UL LLC