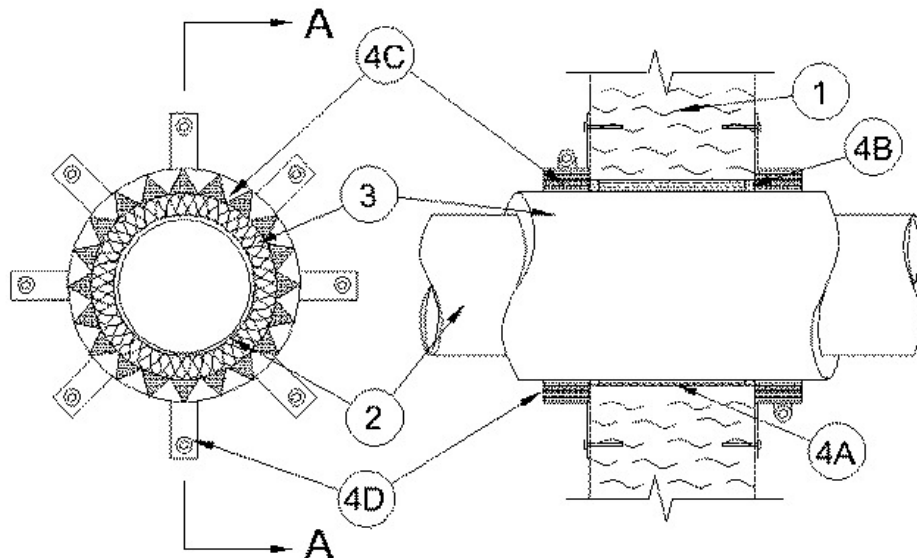


F Ratings — 1 and 2 Hr (See Item 1)  
T Ratings — 1 and 2 Hr (See Item 1)



Section A-A

**1. Wall Assembly** — The 1 or 2 hr fire rated composite wall assembly shall be constructed of nom 4 in. (102 mm) or 7 in. (178 mm) thick, respectively, galvanized steel or painted galvanized steel faced **Partition Panel Units\*** (CJMR) installed in the manner specified in Wall and Partition Design No. U050 in the Fire Resistance Directory. Max diam of opening is 9-3/8 in. (238 mm). Opening can be located on or off panel unit joints.

**The hourly F and T Ratings of the firestop system are equal to the hourly fire rating of the wall assembly in which it is installed.**

**MBCI** — Eco-Ficient Partition Units

**METL-SPAN, A DIVISION OF NCI GROUP, INC.** — ThermalSafe Partition Units

**2. Through-Penetrants** — One nonmetallic pipe or tube to be installed eccentrically or concentrically within the opening. Pipe or tube to be rigidly supported on both sides of the wall assembly. The following types and sizes of nonmetallic pipes or tubing may be used:

A. **Polyvinyl Chloride (PVC) Pipe** — Nom 6 in. (152 mm) diam (or smaller) Schedule 40 solid core PVC for use in closed (process or supply) or vented (drain, waste or vent) piping systems.

B. **Chlorinated Polyvinyl Chloride (CPVC) Pipe** — Nom 6 in. (152 mm) diam (or smaller) SDR 13.5 CPVC pipe for use in closed (process or supply) piping systems.

**3. Pipe Covering\*** — Nom 1 in. (25 mm) thick hollow cylindrical heavy density (min 3.5 pcf or 56 kg/m<sup>3</sup>) glass fiber units jacketed on the outside with an all service jacket. Longitudinal joints sealed with metal fasteners or factory-applied self-sealing lap tape. Transverse joints secured with metal fasteners or with butt tape supplied with the product. An annular space of min 1/4 in. (6 mm) to max 1/2 in. (13 mm) is required within the firestop system.

See **Pipe and Equipment Covering — Materials** (BRGU) category in the Building Materials Directory for the names of manufacturers. Any pipe covering material meeting the above specifications and bearing the UL Classification Marking with a Flame Spread Index of 25 or less and a Smoke Developed Index of 50 or less may be used.

**4. Firestop System** — The firestop system shall consist of the following:

A. **Packing Material** — Min 4 pcf (64 kg/m<sup>3</sup>) mineral wool batt insulation firmly packed into opening as a permanent form. Min 3-1/4 in. (83 mm) and min 6-1/4 in. (159 mm) thickness required for 1 hr and 2 hr fire rated walls, respectively. Packing material may be recessed from one or both surfaces of wall to accommodate the thickness of the optional fill material (Item 4B).

**B. Fill, Void or Cavity Material\* — Sealant** — (Optional) - Nom 3/8 in. (10 mm) thickness of fill material applied within the annulus, flush with one or both wall surfaces.

See **Fill, Void or Cavity Material** (XHHW) category in the Fire Resistance Directory for the names of manufacturers. Any sealant or caulk material meeting the above specification and bearing the UL Classification Marking may be used.

**C. Fill, Void or Cavity Material\* — Wrap Strip** — Nom 1/4 in. (6 mm) thick by 2 in. (51 mm) wide intumescent wrap strip. Layers of wrap strip are individually or continuously wrapped around the insulated through-penetrant. Ends of individual layers butted and held in place with masking tape. Butted ends in successive layer shall be offset. Wrap strip butted tightly against both surfaces of wall. See Table below for number of layers of wrap strip required.

**RECTORSEAL** — [Metacaulk Wrap Strip](#)

Max Pipe Diam, In. (mm)	No. of Layers of Wrap Strip Required
6 (152)	4
4 (102)	3
2 (51)	2

**D. Steel Collar** — Collar fabricated from coils of precut min 0.016 in. (0.41 mm) thick (No. 28 gauge) galv steel available from wrap strip manufacturer or field assembled. Collar shall be nom 2 in. (51 mm) deep with 1 in. (25 mm) wide by 1-1/2 in. (38 mm) long anchor tabs on 4 in. (102 mm) centers for securement to both surfaces of wall. In addition, collars contain retainer tabs 1/2 in. (13 mm) wide by 3/4 in. (19 mm) long, located opposite the anchor tabs. Collar shall be wrapped over the wrap strip, overlapping min 1 in. (25 mm) and secured with a nom 1/2 in. (13 mm) wide stainless steel band clamp. The retainer tabs are folded 90 deg towards the pipe to maintain the annular space around the pipe and to retain the wrap strip. Collar secured to both surfaces of wall at each anchor tab by means of min No. 12 sheet metal screws in conjunction with 1-1/4 in. (32 mm) diam fender washers.

\*,+ Indicates such products shall bear the UL or cUL Certification Mark for jurisdictions employing the UL or cUL Certification (such as Canada), respectively.

Reprinted from the Online Certifications Directory with permission from UL. ©UL LLC