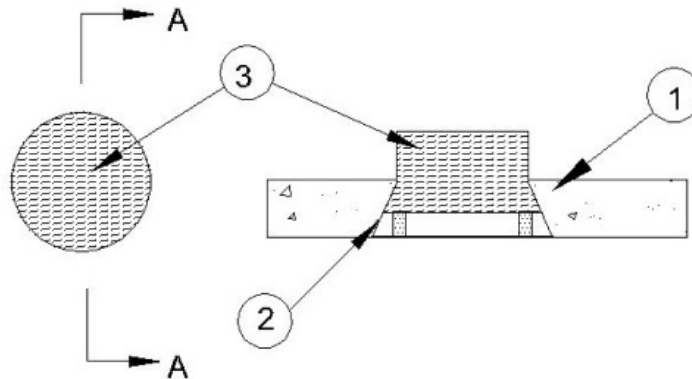


**F Rating — 2 Hr**  
**T Rating — 2 Hr**  
**W Rating — Class 1 (See Item 4)**



**Section A-A**

**1. Floor Assembly** — Min 2-1/2 in. (64 mm) thick reinforced lightweight or normal weight (100-150 pcf or 1600-2400 kg/m<sup>3</sup>) concrete.

**2. Firestop Devices\*** — Cast in place firestop device permanently embedded during concrete placement in accordance with accompanying installation instructions. The device may project up to a max of 3-1/2 in. (89 mm) above top surface of floor. The devices are provided in two sizes, nom 2-1/2 in. (64 mm) and nom 4 in. (102 mm) sizes.

**RECTORSEAL** — [Metacaulk or Rectorseal Cast-in-Place Firestop Device](#)

**3. Packing Material** — Min 3-1/2 in. (76 mm) thickness of min 4 pcf (64 kg/m<sup>3</sup>) mineral wool batt insulation firmly packed into the top of the firestop device (Item 2) as a permanent form extending 1 in. (25 mm) above the top surface of the floor inside the device.

**4. Fill, Void or Cavity Material\* — Caulk** — (Optional, Not Shown) - Min 1/4 in. (6 mm) thickness for 2-1/2 in. (64 mm) and 4 in. (102 mm) CIP device. Caulk applied within device, flush with top surface of device.

**RECTORSEAL** — [Metacaulk 835+](#), [Metacaulk 1200SL](#), [Metacaulk 1200](#), [Metacaulk 150+](#) (1200 and 150+ only with 2-1/2 in. (64 mm) CIP device)

**W Rating only applies when the optional caulk is used.**

\*,+ Indicates such products shall bear the UL or cUL Certification Mark for jurisdictions employing the UL or cUL Certification (such as Canada), respectively.

Reprinted from the Online Certifications Directory with permission from UL. ©UL LLC