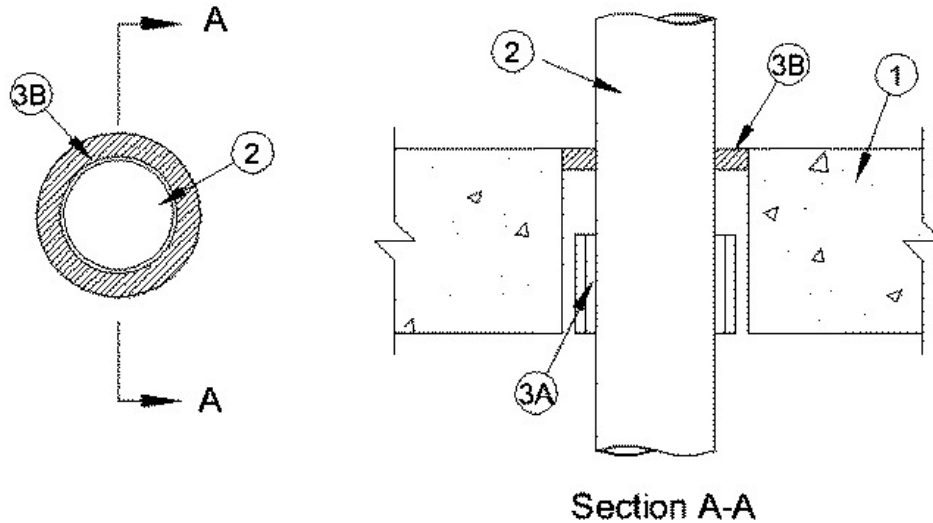


ANSI/UL1479 (ASTM E814)	CAN/ULC S115
F Rating — 2 Hr	F Rating — 2 Hr
T Rating — 1/4 and 1-1/4 Hr (See Item 2)	FT Rating — 1/4 and 1-1/4 Hr (See Item 2)
	FH Rating — 2 Hr
	FTH Rating — 1/4 and 1-1/4 Hr (See Item 2)



System tested with a pressure differential of 50 Pa between the exposed and the unexposed surfaces with the higher pressure on the exposed side.

1. **Floor or Wall Assembly** — Min 4-1/2 in (114 mm). thick reinforced lightweight or normal weight (100-150 pcf or 1600-2400 kg) concrete. Max diam of opening is 6 in. (152 mm).

1A. **Steel Deck/Floor Assembly** — (Not Shown) — As an alternate to Item 1, the floor assembly may consist of a fluted steel deck/concrete floor assembly. The floor assembly shall be constructed of the materials and in the manner described in the individual Floor-Ceiling Design in the UL Fire Resistance Directory and shall include the following construction features:

- A. **Steel Floor and Form Units*** — Min 2-1/2 in. (64 mm) deep galv fluted units.
- B. **Concrete** — Min 2-1/2 in. (64 mm) thick reinforced concrete, as measured from the top plane of the floor units.

2. **Through Penetrants** — One nonmetallic pipe or conduit centered within opening with a nom 3/4 in. (19 mm) annular space between penetrant and periphery of opening. Penetrant to be rigidly supported on both sides of floor or wall assembly. The following types and sizes of penetrants may be used:

- A. **Polyvinyl Chloride (PVC) Pipe** — Nom 4 in. (102 mm) diam (or smaller) Schedule 40 solid core or cellular core PVC pipe for use in closed (process or supply) or vented (drain, waste or vent) piping systems. **FT and FTH Ratings are 1-1/4 Hr.**
- B. **Fire Retardant Polypropylene (FRPP) Pipe** — Nom 4 in. (102 mm) in. diam (or smaller) Schedule 40 FRPP pipe for use in closed (process or supply) or vented (drain, waste or vent) piping systems. **FT and FTH Ratings are 1/4 Hr.**

4. **Firestop System** — The firestop system shall consist of the following:

A. **Fill, Void or Cavity Materials* - Wrap Strip** — Nom 1/4 in. (6.4 mm) thick intumescent material supplied in 2 in. (51 mm) wide strips. Min two layers of wrap strip individually wrapped tightly around the nonmetallic penetrant with ends butted and held in place with masking tape. Butted ends in successive layers shall be offset. Bottom edge of wrap strip to be flush with the bottom surface of floor or with both surfaces of wall assembly. When used with the steel deck floor assembly, bottom edge of wrap strip shall be flush with the crest of the steel form units.

RECTORSEAL — [Metacaulk Wrap Strip](#)

B. **Fill, Void or Cavity Material* — Caulk** — Min 1/2 in. (13 mm) thickness of fill material applied within the annulus, flush with top surface of floor or with both surfaces of wall assembly.

RECTORSEAL — [Metacaulk 1000](#) or [Metacaulk 350i](#)



*,+ Indicates such products shall bear the UL or cUL Certification Mark for jurisdictions employing the UL or cUL Certification (such as Canada), respectively.

Reprinted from the Online Certifications Directory with permission from UL. ©UL LLC