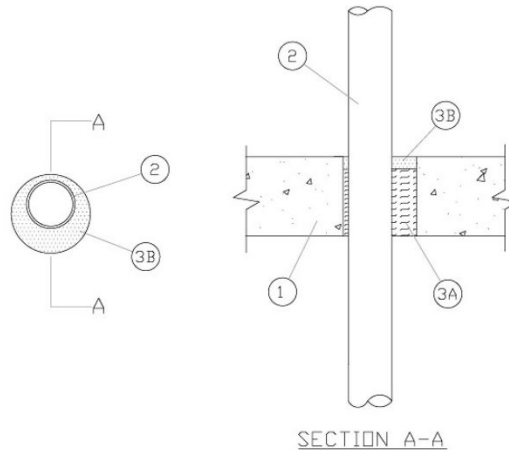


ANSI/UL1479 (ASTM E814)	CAN/ULC S115
F Rating — 1 Hr	F Rating — 1 Hr
T Ratings — 3/4 and 1 Hr (See Item 2)	FT Ratings — 3/4 and 1 Hr (See Item 2)
	FH Rating — 1 Hr
	FTH Ratings — 3/4 and 1 Hr (See Item 2)



1. Floor or Wall Assembly — Min 4-1/2 in. (114 mm) thick floor, or min 5-1/8 in. (130 mm) thick wall, constructed of reinforced lightweight or normal weight (100-150 pcf or 1600-2400 kg/m³) concrete. Wall may also be constructed of any UL Classified Concrete Blocks*. Max diam of opening is 4 in. (102 mm).

See Concrete Blocks (CAZT) category in the Fire Resistance Directory for names of manufacturers.

2. Through Penetrating Product* — Corrugated Medical Tubing (CMT) — One nom 2 in. (51 mm) diam (or smaller) semi-rigid copper alloy medical tubing to be installed either concentrically or eccentrically within the firestop system. The annular space shall be min 1/4 in. (6 mm) to max 1-1/8 in. (28.6 mm). Tubing to be rigidly supported on both sides of floor or wall assembly. The T, FT and FTH Ratings are 1 hr except that for tubing exceeding nom 1 in. (25 mm) diam, the T, FT and FTH Ratings are 3/4 hr.

OMEGA FLEX INC — MediTrac® Corrugated Medical Tubing

3. Firestop System — The firestop system shall consist of the following:

A. **Packing Material** — Min 3-7/8 in. (98.4 mm) thickness of min 4 pcf (64 kg/m³) mineral wool batt insulation firmly packed into opening as a permanent form. Packing material to be recessed from top surface of floor or from both surfaces of wall as required to accommodate the required thickness of fill material.

B. **Fill, Void or Cavity Material*** — **Caulk** — Min 5/8 in. (16 mm) thickness of fill material applied within the annulus, flush with top surface of floor or with both surfaces of wall.

RECTORSEAL — [Metacaulk 1000](#)

* Indicates such products shall bear the UL or cUL Certification Mark for jurisdictions employing the UL or cUL Certification (such as Canada), respectively.