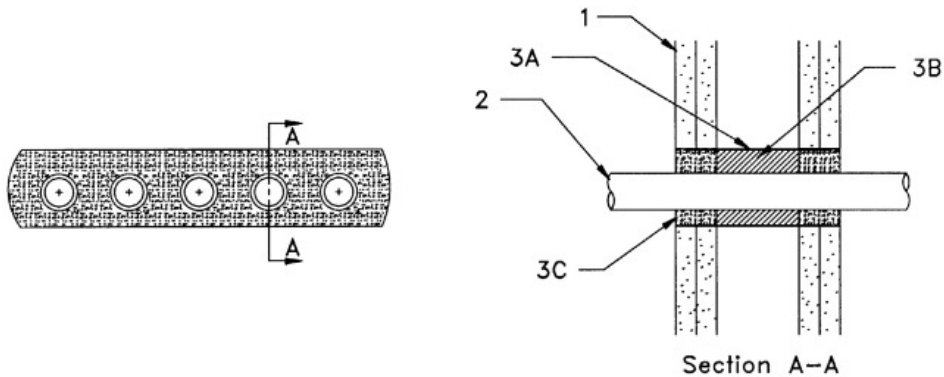


F Rating — 2 Hr  
T Rating — 0 Hr



**1. Wall Assembly** — The fire-rated gypsum wallboard/stud wall assembly shall be constructed of the materials and in the manner specified in the individual U300 or U400 Series Wall and Partition Designs in the UL Fire Resistance Directory and shall include the following construction features:

**A. Studs** — Wall framing may consist of either wood studs or steel channel studs. Wood studs to consist of nom 2 by 4 in. lumber spaced 16 in. OC. Steel studs to be min 2-1/2 in. wide and spaced max 24 in. OC.

**B. Gypsum Board\*** — Two layers of nom 5/8 in. thick gypsum wallboard, as specified in the individual Wall and Partition Design. Max area of opening is 41.5 sq in. with max dimension of 12.5 in.

**2. Steel Pipe** — A max of five nom 1 in. diam (or smaller) Schedule 40 (or heavier) steel pipes to be installed within the opening. The space between pipes and between pipes and periphery of opening shall be min 1/2 in. to max 1 in. Pipe to be rigidly supported on both sides of wall assembly.

**3. Firestop System** — The firestop system shall consist of the following:

**A. Steel Wire Mesh** — No. 8 steel wire mesh having a min 1 in. lap along the longitudinal seam. Length of steel wire mesh to be 4 in., centered and formed to fit periphery of through opening.

**B. Packing Material** — Min 2-1/2 in. thickness of backer rod, foamed plastic backer material or mineral wool batt insulation firmly packed into opening as a permanent form. Packing material to be recessed from both surfaces of wall as required to accommodate the required thickness of fill material.

**C. Fill, Void or Cavity Material\*** — **Caulk** — Min 1-1/4 in. thickness of tightly packed fill material applied within the annulus, flush with both surfaces of wall.

**RECTORSEAL** — [Metacaulk 950](#)

\*,+ Indicates such products shall bear the UL or cUL Certification Mark for jurisdictions employing the UL or cUL Certification (such as Canada), respectively.

Reprinted from the Online Certifications Directory with permission from UL. ©UL LLC