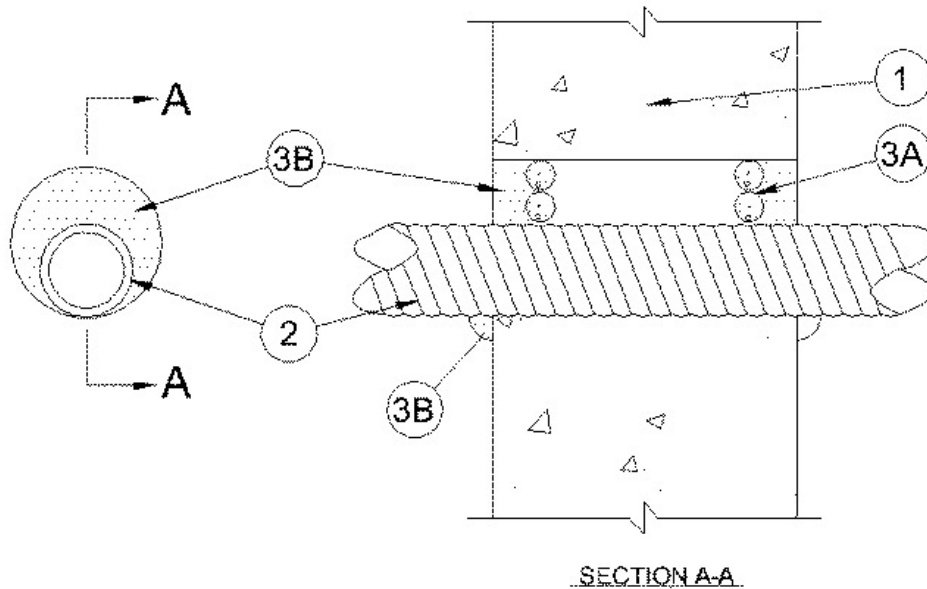


**F Rating — 2 Hr**  
**T Ratings — 1/4 and 2 Hr (See Item 2)**



**1. Wall Assembly** — Min 6 in. (152 mm) thick reinforced lightweight or normal weight (100-150 pcf or 1600-2400 kg/m<sup>3</sup>) concrete. Wall may also be constructed of any UL Classified **Concrete Blocks\***. Max diam of opening is 3 in. (76 mm). See **Concrete Blocks** (CAZT) category in the Fire Resistance Directory for names of manufacturers.

**1A. Metallic Sleeve** — (Optional) — Cylindrical sleeve fabricated from min No. 26 gauge galv sheet steel and having a min 1 in. (25 mm) overlap along the longitudinal seam. Ends of sleeve to be flush with or extend a max 1 in. (25 mm) beyond each surface of wall.

**2. Through-Penetrant** — One Flexible Metal Conduit+ to be installed either eccentrically or concentrically within the firestop system. The annular space shall be min 0 in. (point contact) to max 1-1/8 in. (29 mm). Conduit to be rigidly supported on both sides of wall assembly. The following types and sizes of conduit may be used:

**A. Steel Flexible Metal Conduit** — Nom 1-1/2 in. (38 mm) diam (or smaller) steel flexible metal conduit. **When steel flexible metal conduit is used, the hourly T Rating of the firestop system is equal to the hourly fire rating of the wall assembly in which it is installed.**

See **Flexible Metal Conduit** (DXUZ) category in the Electrical Construction Materials Directory for names of manufacturers.

**B. Aluminum Flexible Metal Conduit** — Nom 1-1/2 in. (38 mm) diam (or smaller) aluminum flexible metal conduit. **When aluminum flexible metal conduit is used, the hourly T Rating of the firestop system is 1/4 hr.**

See **Flexible Metal Conduit** (DXUZ) category in the Electrical Construction Materials Directory for names of manufacturers.

**3. Firestop System** — The firestop system shall consist of the following:

**A. Packing Material** — Foam backer rod firmly packed into opening as a permanent form. Packing material to be recessed from both surfaces of wall to accommodate the required thickness of fill material.

**B. Fill, Void or Cavity Materials\* - Caulk** — Min 1/2 in. (13 mm) thickness of fill material applied within the annulus, flush with both surfaces of wall. At point contact location between wall and conduit, a min 1/4 in. (6 mm) diam bead of fill material shall be applied to the wall/conduit interface on both surfaces of wall.

**RECTORSEAL** — [Metacaulk 1000](#)

+ Bearing the UL Listing Mark

\*,+ Indicates such products shall bear the UL or cUL Certification Mark for jurisdictions employing the UL or cUL Certification (such as Canada), respectively.

Reprinted from the Online Certifications Directory with permission from UL. ©UL LLC