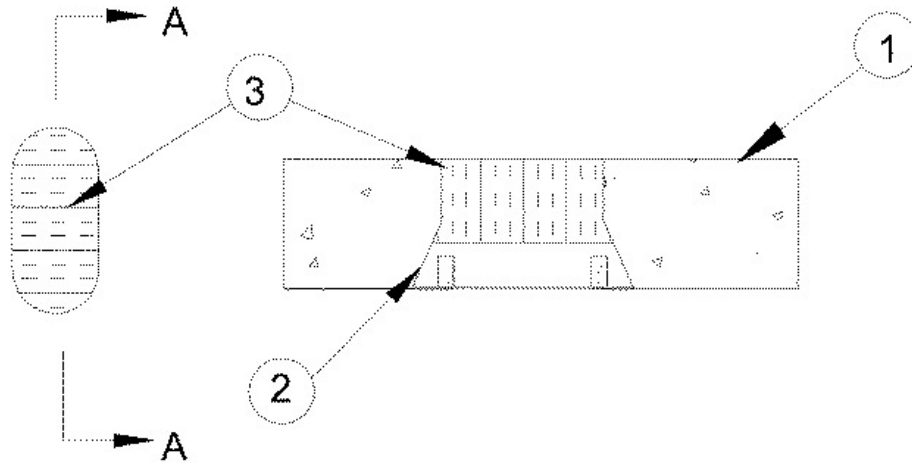


**F Rating - 3 Hr**  
**T Rating - 3 Hr**  
**W Rating - Class 1 (See Item 4)**



## Section A-A

**1. Floor Assembly** — Min 4-1/2 in. (114 mm) thick reinforced lightweight or normal weight (100-~~150~~ pcf or 1600-2400 kg/m<sup>3</sup>) concrete.

**2. Firestop Device\*** — Cast in place firestop device permanently embedded during concrete placement in accordance with accompanying installation instructions. The device may project up to a max of 3-1/2 in. (89 mm) above top surface of floor or may be trimmed flush with top surface of floor.

**RECTORSEAL** — Metacaulk or Rectorseal Multi Purpose CIP Device

**3. Packing Material** — Min 3 in. (76 mm) thickness of min 4 pcf (64 kg/m<sup>3</sup>) mineral wool batt insulation firmly packed into the top of the firestop device (Item 2) as a permanent form, flush with the top surface of the floor or recessed from the top surface of the device to accommodate the required thickness of caulk (Item 5).

**4. Fill, Void or Cavity Material\*** — **Caulk** — (Optional, Not Shown) - Min 1/4 in. (6 mm) thickness caulk applied within device, flush with top surface of device.

**RECTORSEAL** — [Metacaulk 835+](#)

**W Rating only applies when the optional caulk is used.**

\*,+ Indicates such products shall bear the UL or cUL Certification Mark for jurisdictions employing the UL or cUL Certification (such as Canada), respectively.

Reprinted from the Online Certifications Directory with permission from UL. ©UL LLC