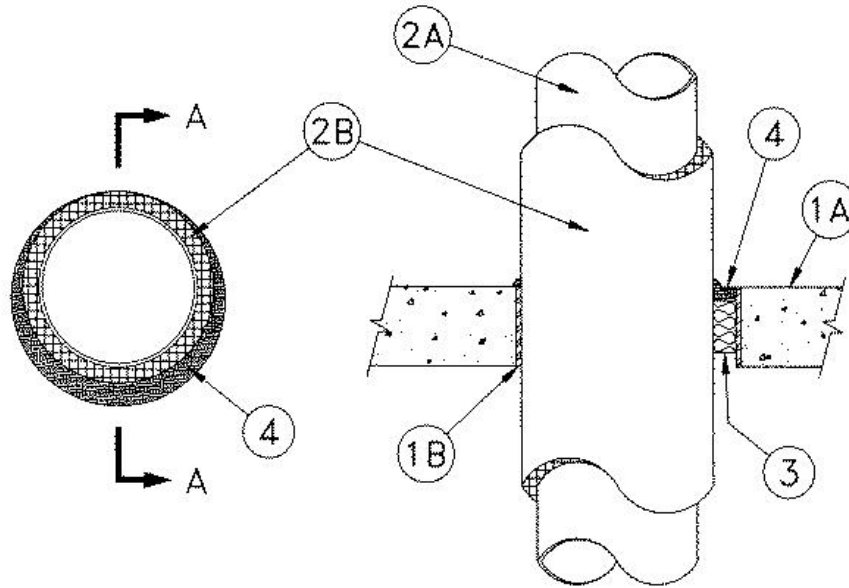


ANSI/UL1479	CAN/ULC S115
F Rating — 3 Hr	F Rating — 3 Hr
T Rating — 3/4 Hr	FT Rating — 3/4 Hr
	FH Rating — 3 Hr
	FTH Rating — 3/4 Hr



SECTION 'A-A'

**1A. Floor or Wall Assembly** — Min 4-1/2 in. thick reinforced normal weight (150 pcf) concrete. Wall may also be constructed of any UL classified **Concrete Blocks\***. Max diam of opening is 18 in.

See **Concrete Blocks** (CAZT) category in the Fire Resistance Directory for names of manufacturers.

**1B. Metallic Sleeve (Optional)** — Nom 18 in. (or smaller) Schedule 10 (or heavier) steel pipe sleeve, cast or grouted into floor or wall assembly.

**2A. Through Penetrants** — One nom 10 in. (or smaller) Schedule 40 (or heavier) steel or iron pipe. Pipe to be firmly supported on both sides of opening. Pipe installed concentrically or eccentrically such that the annular space between the insulated pipe and the periphery of the opening is min 0 in. (point of contact) to max 4-1/4 in.

**2B. Pipe Covering Material\*** — Cellular Glass Insulation — Nom 1 in. thick cellular glass units sized to the outside diam of the metallic pipe and supplied in 18 or 24 in. long, half sections. Pipe insulation installed on pipe in accordance with manufacturer's instructions. The insulation material may be jacketed with 0.010 in. thick aluminum sheet wrapped tightly around with a min 2 in. overlap. Jacket to be installed with edge abutting surface of caulk fill material (Item 4) on top surface of floor or both surfaces of wall. Jacket to be well secured with metallic bands.

**3. Packing Material** — Mineral wool insulation of min 4 pcf density and min 2 in. thickness, compressed 33%, and installed into the opening as a permanent form. Insulation to be recessed by a min depth of 1 in. from top surface of floor or both surfaces of wall.

**4. Fill, Void, or Cavity Materials\*** — Caulk. Installed to fill annular space to a min depth of 1 in. over mineral wool insulation and made flush with top surface of floor or both surfaces of wall. Additional material to be installed to form a 1/4 in. crown around the circumference of the insulated pipe at the point of contact with the periphery of opening.

**RECTORSEAL** — FlameSafe® FS900+, [Metacaulk MC 150+](#) and Biostop BF [150+](#)

\*,+ Indicates such products shall bear the UL or cUL Certification Mark for jurisdictions employing the UL or cUL Certification (such as Canada), respectively.



---

Reprinted from the Online Certifications Directory with permission from UL. ©UL LLC