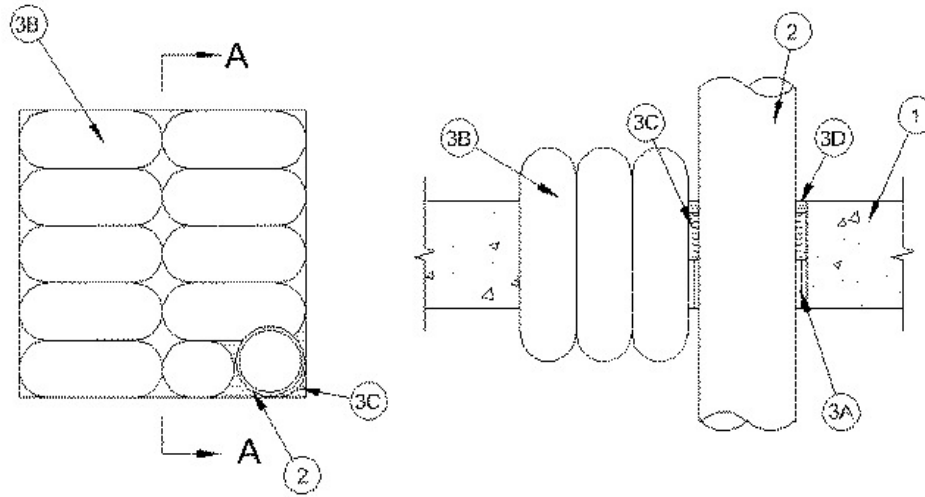


F Rating — 2 Hr
T Rating — 2 Hr



SECTION A-A

1. **Floor or Wall Assembly** — Min 4-1/2 in. thick reinforced lightweight or normal weight (100-150 pcf) concrete. Wall may also be constructed of any UL Classified **Concrete Blocks***. Max area of opening not to exceed 144 sq. in. with a max dimensions of 12 in. See **Concrete Blocks** (CAZT) category in the Fire Resistance Directory for names of manufacturers.

2. **Through Penetrant** — One nonmetallic pipe to be centered or off- set within the firestop system. The annular space shall be min 1/2 in. Pipe to be rigidly supported on both sides of floor or wall assembly. The following types and sizes of nonmetallic pipes may be used:

A. **Polyvinyl Chloride (PVC) Pipe** — Nom 4 in. diam (or smaller) Schedule 40 cellular or solid core PVC pipe for use in closed (process or supply) or vented (drain, waste or vent) piping systems.

B. **Chlorinated Polyvinyl Chloride (CPVC) Pipe** — Nom 4 in. diam (or smaller) SDR 13.5 CPVC pipe for use in closed (process or supply) piping systems.

3. **Firestop System** — The firestop system shall consist of the following:

A. **Fill, Void or Cavity Material* - Wrap Strip** — Nom 1/4 in. thick by 2 in. wide intumescent wrap strip. Two layers of wrap strip are individually wrapped around the through-penetrant with ends butted and held in place with masking tape. Butted ends in successive layer shall be offset. Wrap strip installed within annular space with lower edge flush with bottom surface of floor or both surfaces of wall.

RECTORSEAL — [Metacaulk Wrap Strip](#)

B. **Fill, Void or Cavity Material* - Pillows** — Max 6 in. long by 9 in. wide by 3 in. thick plastic covered coils intumescent pillows tightly packed into opening filling annular space between penetrants and between penetrant and periphery. Pillows installed with 6 in. dimension projecting through floor or wall and centered within opening.

RECTORSEAL — [Metacaulk Pillows](#)

C. **Packing Material** — Min 2 in. thickness of min 4 pcf mineral wool batt insulation firmly packed around pipe as a permanent form. Packing material to be recessed from top surface of floor or both sides of wall as required to accommodate the required thickness of fill material.

D. **Fill, Void or Cavity Material* - Caulk** — Min 1/4 in. thickness of fill material applied around pipe flush with top surface of floor or with both surfaces of wall.

RECTORSEAL — [Metacaulk 1000](#)

*,+ Indicates such products shall bear the UL or cUL Certification Mark for jurisdictions employing the UL or cUL Certification (such as Canada), respectively.

Reprinted from the Online Certifications Directory with permission from UL. ©UL LLC