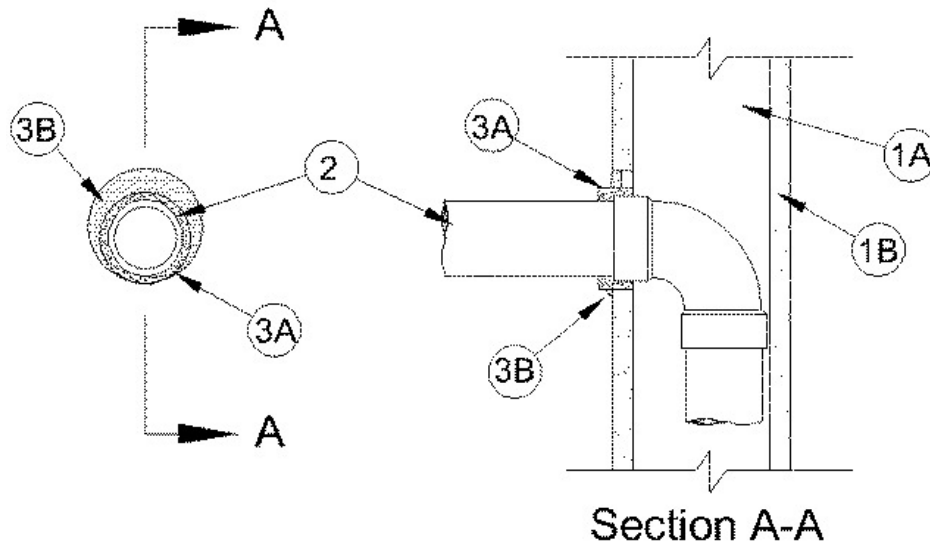


F Rating — 1 Hr
T Rating — 3/4 Hr



1. Wall Assembly — The 1 hr fire-rated gypsum board/stud wall assembly shall be constructed of the materials and in the manner specified in the individual U300 Series Wall and Partition Designs in the UL Fire Resistance Directory and shall include the following construction features:

A. **Studs** — Wall framing shall consist of wood studs. Wood studs to consist of nom 2 by 6 in. lumber spaced 16 in. OC.

B. **Gypsum Board*** — Min 5/8 in. thick, 4 ft wide with square or tapered edges. The gypsum board type, thickness, number of layers and orientation shall be as specified in the individual U300 Wall and Partition Design. Max diam of opening is 5-1/2 in.

2. Through Penetrants — One nonmetallic pipe installed within stud cavity and connected to a 90° elbow. Additional nonmetallic pipe connected to elbow and penetrates one side of wall concentrically or eccentrically within the opening. The annular space between nonmetallic pipe and periphery of opening shall be min 1/2 in to max 1 in. Pipe to be rigidly supported within wall and on penetrated side of wall assembly. The following types and sizes of nonmetallic pipes may be used:

A. **Polyvinyl Chloride (PVC) Pipe** — Nom 3 in. diam (or smaller) Schedule 40 cellular or solid core PVC pipe for use in closed (process or supply) or vented (drain, waste or vent) piping systems.

B. **Chlorinated Polyvinyl Chloride (CPVC) Pipe** — Nom 3 in. diam (or smaller) SDR 13.5 CPVC pipe for use in closed (process or supply) piping systems.

3. Firestop System — The firestop system shall consist of the following:

A. **Fill, Void or Cavity Material* - Wrap Strip** — Nom 1/4 in. thick by 1 in. wide intumescent wrap strip. Two layers of wrap strip are individually wrapped around the through-penetrant with ends butted and held in place with tie wire. Butted ends in successive layer shall be offset. Wrap strips extend 1/4 in. beyond surface of wall.

RECTORSEAL — [Metacaulk Wrap Strip](#)

B. **Fill, Void or Cavity Material* - Caulk** — Min 1/4 in. thickness of fill material applied between wrap strip and periphery of opening, flush with surface of wall.

RECTORSEAL — [Metacaulk 1000](#), [Metacaulk 350j](#) and [MC150+](#).

*,+ Indicates such products shall bear the UL or cUL Certification Mark for jurisdictions employing the UL or cUL Certification (such as Canada), respectively.

Reprinted from the Online Certifications Directory with permission from UL. ©UL LLC