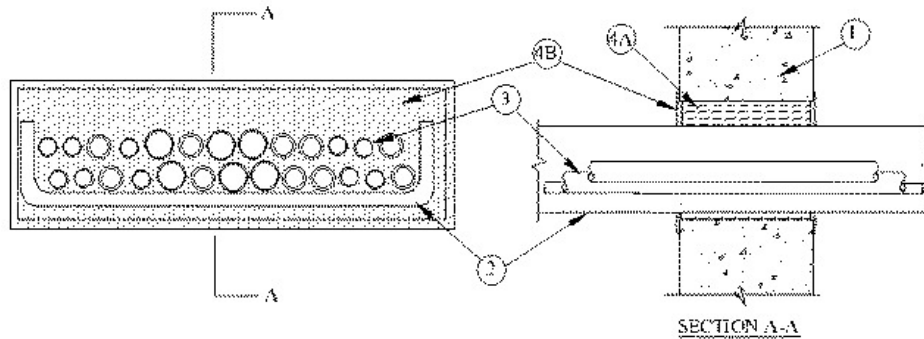


F Rating — 2 Hr
T Rating — 3/4 Hr



1. **Wall Assembly** — Min 6 in. thick reinforced lightweight or normal weight (100-150 pcf) concrete. Wall may also be constructed of any UL Classified **Concrete Blocks***. The max area of opening is 224 sq in. with max dimension of 28 in.
See **Concrete Blocks** (CAZT) category in the Fire Resistance Directory for names of manufacturers.
2. **Cable Tray*** — Max 24 in. wide by max 4 in. deep open ladder cable tray with channel-shaped side rails formed from 0.060 in. thick (No. 16 gauge) galv steel with nom 1 in. diam rungs spaced max 9 in. OC. The annular space between the cable tray and the periphery of the opening shall be min 1 in. to max 5 in. Cable tray to be rigidly supported on both sides of floor or wall assembly.
3. **Cables** — Aggregate cross-sectional area of cables in cable tray to be max 41 percent of the cross-sectional area of the cable tray based on a max 3 in. deep cable loading depth within the cable tray. Any combination of the following types and sizes of copper conductor cables may be used:
 - A. Max 300 pair, No. 24 AWG copper conductor communication cable with polyvinyl chloride insulation and jacket material.
 - B. Max - 25 pair, No.24 AWG copper conductor communication cable with polyvinyl chloride insulation and jacket material.
 - C. Max 750 MCM power cables, THHN or THWN jacketed.
 - D. Max 6 /C Commscope Optical Research 2001 fiber optic cable.
 - E. Max 12/C Commscope Optical Research 2001 fiber optic cable.
 - F. Max 8/C No. 12 AWG copper conductor Type THHN or THWN power cable.
4. **Firestop System** — The firestop system shall consist of the following:
 - A. **Packing Material** — Min 6 in. thickness of min 4 pcf mineral wool batt insulation firmly packed into opening as a permanent form, flush with both surfaces of wall.
 - B. **Fill, Void or Cavity Material* Sealant** — Min 1/8 in. thickness of fill material applied over mineral wool on both surfaces of wall. Fill material to overlap 1/2 in. onto wall, cable tray and cables in cable tray. Additional fill material to be forced into cable interstices to max extent possible.
RECTORSEAL — [Metacaulk 1200 Spray](#) or [Metacaulk 1200 Caulk Grade](#)

*,+ Indicates such products shall bear the UL or cUL Certification Mark for jurisdictions employing the UL or cUL Certification (such as Canada), respectively.

Reprinted from the Online Certifications Directory with permission from UL. ©UL LLC