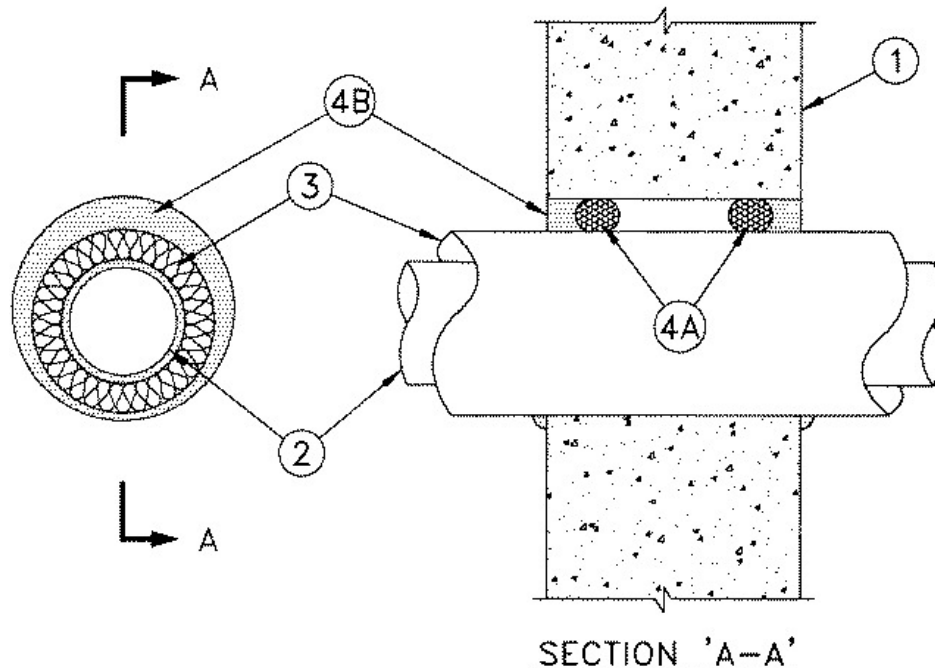


ANSI/UL1479 (ASTM E814)	CAN/ULC S115
F Rating — 2 Hr	F Rating — 2 Hr
T Rating — 1 and 1-1/2 Hr (See Item 4B)	FT Rating — 1 and 1-1/2 Hr (See Item 4B)
L Rating At Ambient — Less Than 1 CFM/sq ft	FH Rating — 2 Hr
L Rating At 400 F — Less Than 1 CFM/sq ft	FTH Rating — 1 and 1-1/2 Hr (See Item 4B)



1. Wall Assembly — Min 6 in. (152 mm) thick reinforced lightweight or normal weight (100-150 pcf or 1600-2400 kg/m³) concrete. Wall may also be constructed of any UL Classified Concrete Blocks*. Max diam of opening is 18-5/16 in. (465 mm). The diam of the opening shall be min 1 in. (25 mm) to max 3 in. (76 mm) larger than the outside diam of pipe covering (see Item 3).
See **Concrete Blocks** (CAZT) in Volume 1 of the Fire Resistance Directory for names of manufacturers.

2. Through Penetrants — One metallic pipe or tube installed concentrically or eccentrically within the firestop system. Pipe or tube to be rigidly supported on both sides of the wall. The following types and sizes of through penetrants may be used:

- A. **Steel Pipe** — Nom 12 in. (305 mm) diam (or smaller) Schedule 30 (or heavier) steel pipe.
 - B. **Iron Pipe** — Nom 12 in. (305 mm) diam (or smaller) cast or ductile iron pipe.
 - C. **Copper Tubing** — Nom 6 in. (152 mm) diam (or smaller) Type L (or heavier) copper tubing.
 - D. **Copper Pipe** — Nom 6 in. diam (152 mm) (or smaller) Regular (or heavier) copper pipe.
- The type and max nom diam of the through penetrant is dependent upon the type of fill material as shown in Item 4B.**

3. Pipe Covering* — One of the following types of pipe coverings shall be used:

- A. **Pipe and Equipment Covering Materials*** — Nom 2 in. (51 mm) thick hollow cylindrical heavy density (min 3.5 pcf or 56 kg/m³) glass fiber units jacketed on the outside with an all service jacket. Longitudinal joints sealed with metal fasteners or factory-applied self-sealing lap tape. Transverse joints secured with metal fasteners or butt tape supplied with the product. The annular space between the insulated through penetrant and the periphery of the opening shall be min 0 in. (0 mm, point contact) to max 1-9/16 in. (40 mm).

See **Pipe and Equipment Covering Materials*** (BRGU) category in the Building Materials Directory for names of manufacturers. Any pipe covering material meeting the above specifications and bearing the UL Classification Marking with a Flame Spread Index of 25 or less and a Smoke Developed Index of 50 or less may be used.

- B. **Pipe and Equipment Covering Materials*** — Nom 2 in. (51 mm) thick unfaced mineral fiber pipe insulation having a min density of 3.5 pcf (56 kg/m³) and sized to the outside diam of the pipe or tube. Pipe insulation secured with min 18 AWG steel wire spaced 12 in. (305 mm) OC. The annular space between insulated penetrating item and the periphery of the

through opening shall be min 0 in. (0 mm, point contact) to max 1-9/16 in. (40 mm).

C. Sheathing Material* — Used in conjunction with Item 3B. Foil-scrim-kraft or all service jacket material shall be wrapped around the outer circumference of the pipe insulation (Item 3B) with the kraft side exposed. Longitudinal and transverse joints sealed with metal fasteners or butt tape.

See **Sheathing Materials*** (BVDV) category in the Building Materials Directory for names of manufacturers. Any sheathing material meeting the above specifications and bearing the UL Classification Marking with a Flame Spread Index of 25 or less and a Smoke Developed Index of 50 or less may be used.

4. Firestop System — The firestop system shall consist of the following:

A. Packing Material — Nom 1 in. (25 mm) foam backer rod firmly packed into the opening as a permanent form to prevent leakage of fill material during installation. Packing material to be recessed from both surfaces of wall as required to accommodate the required thickness of fill material.

B. Fill, Void or Cavity Material*- Sealant — Min 5/8 in. (16 mm) thickness of fill material applied within annulus, flush with each surface of wall. At point contact location, a min 3/8 in. (10 mm) bead of fill material shall be applied to the wall/pipe covering interface on both surfaces of the wall.

The T, FT and FTH Ratings of the firestop system are dependent upon max nom diam and type of the through penetrant and type of fill material as shown in the table below:

Type of Through Penetrant	Max Nom Diam of Through Penetrant, In. (mm)	Type of Fill Material	T Rating, Hr
Copper Tube, Copper Pipe, Steel Pipe, or Iron Pipe	4 (102)	FS1900, Metacaulk 1000 , Metacaulk 350i , Biostop 350i or Biostop 500+	1-1/2
Copper Tube, Copper Pipe, Steel Pipe, or Iron Pipe	6 (152)	FS900+ Sealant, Metacaulk MC 150+ , Biostop BF 150+	1
Steel Pipe, or Iron Pipe	12 (152)	FS900+, FS1900, Metacaulk MC 150+ , Metacaulk 1000 , Metacaulk 350i , Biostop BF 150+ , Biostop 350i or Biostop 500+	1-1/2

RECTORSEAL — FlameSafe® FS900+, FlameSafe® FS1900, [Metacaulk MC 150+](#), [Metacaulk 1000](#), [Metacaulk 350i](#), Biostop BF [150+](#), Biostop 350i or Biostop 500+

*,+ Indicates such products shall bear the UL or cUL Certification Mark for jurisdictions employing the UL or cUL Certification (such as Canada), respectively.

Reprinted from the Online Certifications Directory with permission from UL. ©UL LLC