

# XHEZ - Through-penetration Firestop Systems

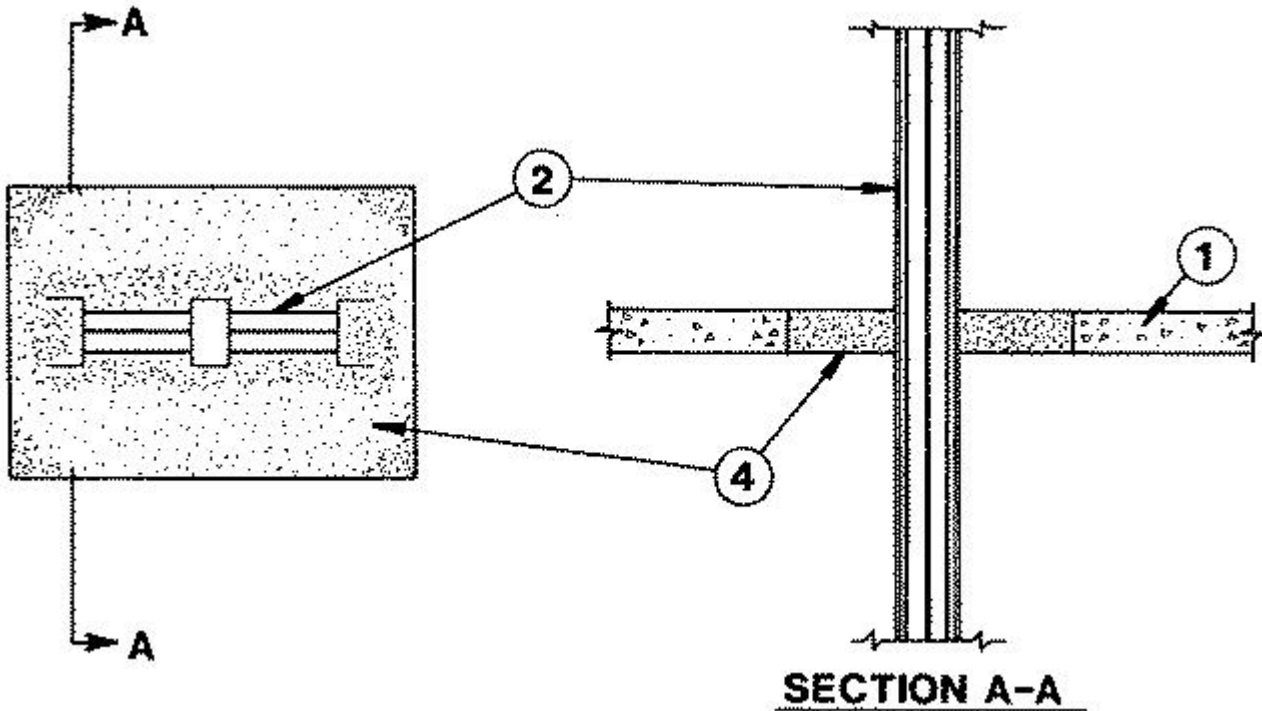
See General Information for Through-penetration Firestop Systems

## System No. C-AJ-6010

December 09, 2009

**F Rating — 3 Hr**

**T Rating — 0 Hr**



1. **Floor or Wall Assembly** — Min 2-1/2 in. thick reinforced lightweight or normal weight (100-150 pcf) concrete. Wall may also be constructed of any UL Classified **Concrete Blocks\***. Max area of opening is 560 sq in. with max dimension of 28 in. See **Concrete Blocks** (CAZT) category in the Fire Resistance Directory for names of manufacturers.

2. **Busway+** — Nom 23 in. wide (or smaller) by 4.5 in. deep (or smaller) "I" shaped aluminum enclosure containing factory mounted aluminum bars rated for 600 V, 4000 A or copper bars rated for 600 V, 5000 A. The busway shall bear the UL

Listing Mark and shall be installed in accordance with all provisions of Article 364 of the National Electrical Code, NFPA No. 70. The annular space between the busway and the periphery of the opening shall be a min of 1 in.

3. **Forms** — (Not Shown) — Used as a form to prevent leakage of fill material during installation. Forms to be a rigid sheet material, cut to fit the contour of the penetrating item and positioned as required to accommodate the required thickness of fill material. Forms may be removed after fill material has cured.

4. **Fill, Void or Cavity Material\*** — **Firestop Mortar** — Min 2-1/2 in. thickness of fill material applied within the annulus. Fill material mixed at a rate of 2.5 parts dry mix to one part water by weight in accordance with the installation instructions supplied with fill material.

**ARABIAN Vermiculite Industries** — Type HP-M

\*Bearing the UL Classification Marking

+Bearing the UL Listing Mark