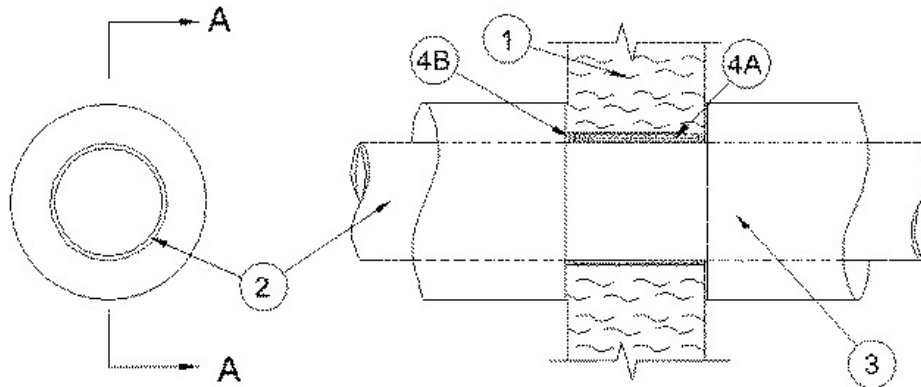


F Ratings — 1 and 2 Hr (See Item 1)
T Ratings — 1 and 2 Hr (See Item 1)



Section A-A

1. Wall Assembly — The 1 or 2 hr fire rated composite wall assembly shall be constructed of nom 4 in. (102 mm) or 7 in. (178 mm) thick, respectively, galvanized steel or painted galvanized steel faced **Partition Panel Units*** (CJMR) installed in the manner specified in Wall and Partition Design No. U050 in the Fire Resistance Directory. Max diam of opening is 9-3/4 in. (248 mm). Opening can be located on or off panel unit joints.

The hourly F and T Ratings of the firestop system are equal to the hourly fire rating of the wall assembly in which it is installed.

MBCI — Eco-Ficient Partition Units

METL-SPAN, A DIVISION OF NCI GROUP, INC. — ThermalSafe Partition Units

2. Through-Penetrants — One metallic pipe or tube to be installed eccentrically or concentrically within the opening. An annular space of min 1/4 in. (6 mm) to max 1/2 in. (13 mm) is required within the firestop system. Pipe or tube to be rigidly supported on both sides of the wall assembly. The following types and sizes of metallic pipe or tubing may be used:

A. **Steel Pipe** — Nom 8 in. (203 mm) diam (or smaller) Schedule 10 (or heavier) steel pipe.

B. **Iron Pipe** — Nom 8 in. (203 mm) diam (or smaller) cast or ductile iron pipe.

C. **Copper Tubing** — Nom 6 in. (152 mm) diam (or smaller) Type L (or heavier) copper tubing.

D. **Copper Pipe** — Nom 6 in. (152 mm) diam (or smaller) Regular (or heavier) copper pipe.

3. Pipe Covering* — Nom 2 in. (51 mm) thick hollow cylindrical heavy density (min 3.5 pcf or 56 kg/m³) glass fiber units jacketed on the outside with an all service jacket. Pipe covering discontinuous through wall opening with ends of pipe covering to butt tightly against face of wall at both sides. Longitudinal joints sealed with metal fasteners or factory-applied self-sealing lap tape. Transverse joints secured with metal fasteners or with butt tape supplied with the product.

See **Pipe and Equipment Covering — Materials** (BRGU) category in the Building Materials Directory for the names of manufacturers. Any pipe covering material meeting the above specifications and bearing the UL Classification Marking with a Flame Spread Index of 25 or less and a Smoke Developed Index of 50 or less may be used.

4. Firestop System — The firestop system shall consist of the following:

A. **Packing Material** — Min 4 pcf (64 kg/m³) mineral wool batt insulation firmly packed into opening as a permanent form. Min 3-1/4 in. (83 mm) and min 6-1/4 in. (159 mm) thickness required for 1 hr and 2 hr rated walls, respectively. Packing material shall be recessed from both surfaces of wall to accommodate the required thickness of the fill material (Item 4B).

B. **Fill, Void or Cavity Material* — Sealant** — Nom 5/8 in. (16 mm) thickness of fill material applied within the annulus, flush with both wall surfaces.

RECTORSEAL — [Metacaulk 1000](#)



*,+ Indicates such products shall bear the UL or cUL Certification Mark for jurisdictions employing the UL or cUL Certification (such as Canada), respectively.

Reprinted from the Online Certifications Directory with permission from UL. ©UL LLC