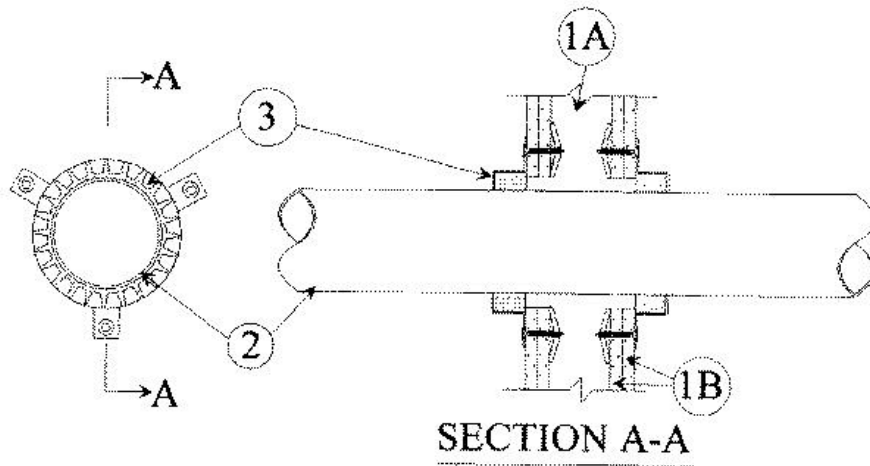


F Ratings — 1 & 2 Hr (See Item 1)  
 T Rating — 0 Hr



**1. Wall Assembly** — The 1 or 2 h fire-rated gypsum wallboard/stud wall assembly shall be constructed of the materials and in the manner specified in the individual U300, U400 or V400 Series Wall and Partition Designs in the UL Fire Resistance Directory and shall include the following construction features:

**A. Studs** — Wall framing may consist of either wood studs or steel channel studs. Wood studs to consist of nom 2 by 4 in. (51 by 102 mm) lumber spaced 16 in. (419 mm) OC. Steel studs to be min 2-1/2 in. (64 mm) wide and spaced max 24 in. (610) OC.

**B. Gypsum Board\*** — 5/8 in. (16 mm) thick, 4 ft (1.22 m) wide with square or tapered edges. The gypsum board type, thickness, number of layers, fastener type and sheet orientation shall be as specified in the individual U300, U400 or V400 Series Design in the UL Fire Resistance Directory. Max diam of opening is 5 in. (127 mm).

**The hourly F rating of the firestop system is equal to the hourly fire rating of the wall assembly in which it is installed.**

**2. Through Penetrant** — One nonmetallic pipe to be centered within the firestop system. A nom annular space of 1/4 in. (6 mm) is required within the firestop system. Pipe to be rigidly supported on both sides of wall assembly. The following types and sizes of nonmetallic pipes may be used:

**A. Polyvinyl Chloride (PVC or uPVC) Pipe** — Nom 4 in. (102 mm) diam (or smaller) Schedule 40 solid or cellular core PVC or uPVC pipe for use in closed (process or supply) or vented (drain, waste or vent) piping system.

**B. Chlorinated Polyvinyl Chloride (CPVC) Pipe** — Nom 4 in. (102 mm) diam (or smaller) SDR 17 or Schedule 40 CPVC pipe for use in closed (process or supply) or vented (drain, waste or vent) piping systems.

**C. Acrylonitrile Butadiene Styrene (ABS) Pipe** — Nom 4 in. (102 mm) diam (or smaller) Schedule 40 solid or cellular core ABS pipe for use in closed (process or supply) or vented (drain, waste or vent) piping systems.

**3. Firestop Device\*** — Galv steel collar lined with an intumescent material sized to fit specific diam of the through penetrant. Device to be installed around through penetrant in accordance with accompanying installation instructions. Device incorporates anchor tabs for securement to both surfaces of wall by means of 1-1/2 in. (38 mm) long laminate screws or 1/8 in. (3 mm) diameter by 2 in. (51 mm) long hollow wall anchors at each anchor tab.

**RECTORSEAL** — [Metacaulk Pipe Collar](#)

\* Indicates such products shall bear the UL or cUL Certification Mark for jurisdictions employing the UL or cUL Certification (such as Canada), respectively.