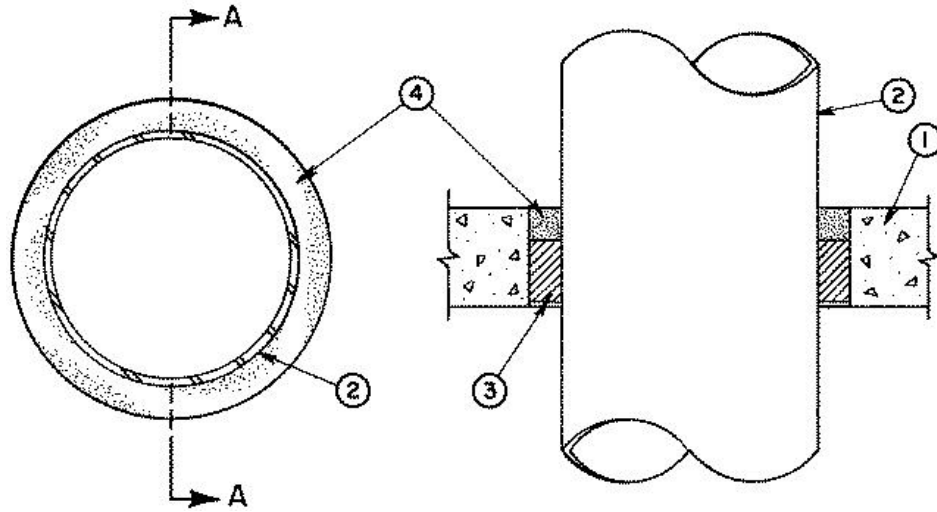


F Rating — 3 Hr
T Rating — 0 Hr



1. Floor or Wall Assembly — Min 3-1/4 in. (83 mm) thick reinforced lightweight or normal weight (100-150 pcf or 1600-2400 kg/m³) concrete. Wall may also be constructed of any UL Classified **Concrete Blocks***. Max diam of opening is 10 in. (254 mm).
 See **Concrete Blocks** (CAZT) category in the Fire Resistance Directory for names of manufacturers.

2. Metallic Pipe — Nom 8 in. (203 mm) diam (or smaller) Schedule 10 (or heavier) steel pipe, nom 6 in. diam (or smaller) rigid steel conduit or nom 4 in. (102 mm) diam (or smaller) steel EMT. Max one steel pipe, conduit or EMT per opening, centered in opening. Pipe or conduit to be rigidly supported on both sides of floor or wall. Through opening diam to be max 1-1/2 in. (38 mm) larger than outside diam of steel pipe or conduit such that max annular space between pipe or conduit and edge of through opening does not exceed 3/4 in. (19 mm)

3. Packing Material — Min 2 in. (51 mm) thickness of min 6 pcf (96 kg/m³) mineral wool insulation firmly packed into opening as a permanent form. Packing material to be recessed from top surface of floor or from both surfaces of wall as required to accommodate the required thickness of fill material.

4. Fill, Void or Cavity Materials* — Sealant — Min 1 in. (25 mm) thickness of fill material applied within the annulus, flush with top surface of floor or with both surfaces of wall.

RECTORSEAL — Types [FS900](#), FS901, FS903, FS903CG, FS905, FS905CG, FS929, FST901, FST903, FST905, [Metacaulk 150+](#)

*,+ Indicates such products shall bear the UL or cUL Certification Mark for jurisdictions employing the UL or cUL Certification (such as Canada), respectively.

Reprinted from the Online Certifications Directory with permission from UL. ©UL LLC