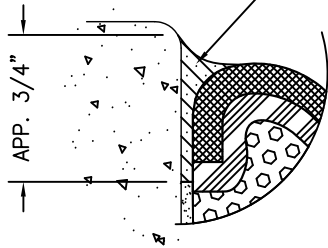
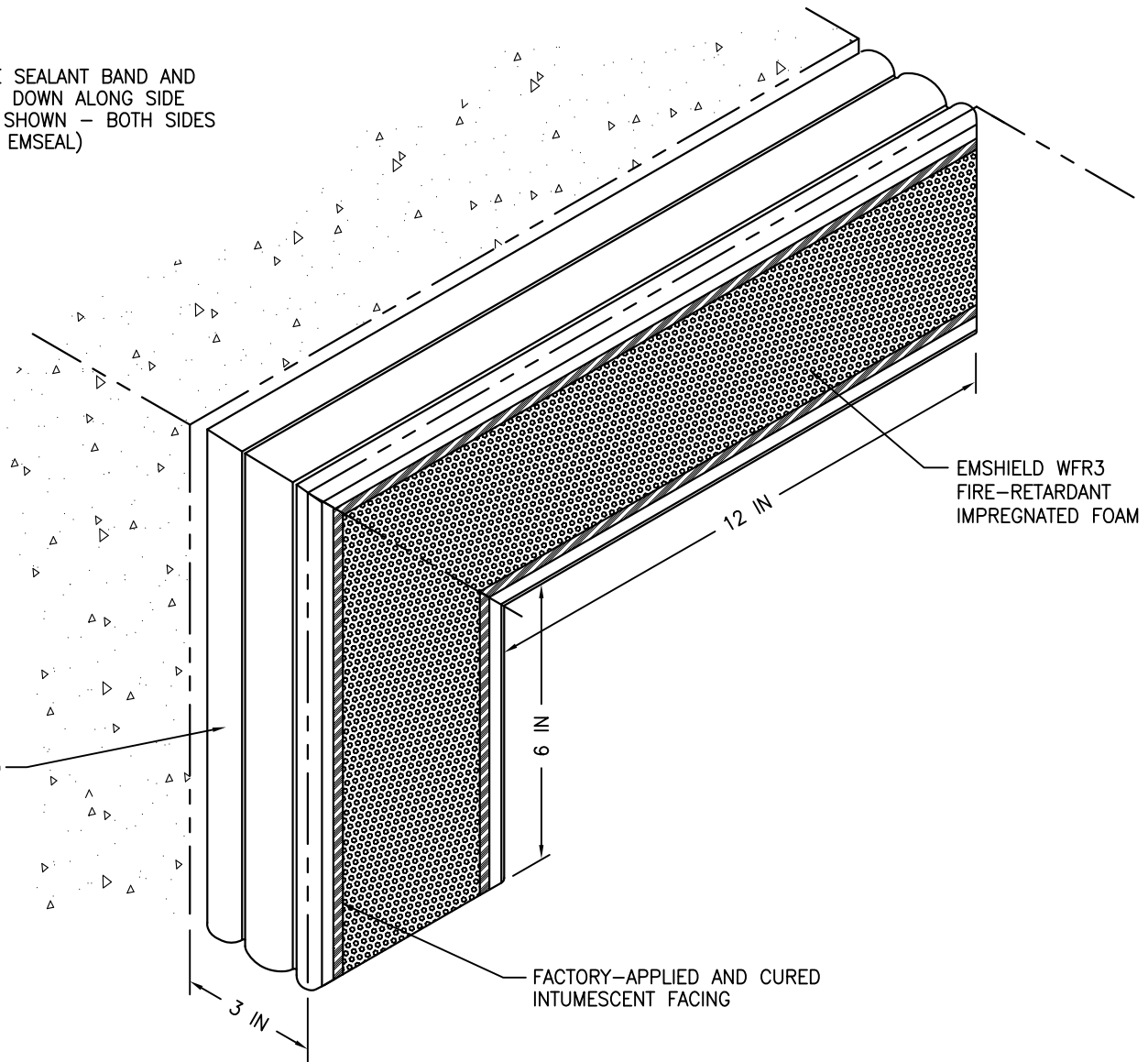


FIELD-APPLIED SILICONE SEALANT BAND AND CORNER BEADS FORCED DOWN ALONG SIDE OF EMSHIELD WFR3 AS SHOWN - BOTH SIDES (SILICONE SUPPLIED BY EMSEAL)



FACTORY-APPLIED AND CURED SILICONE FACING AVAILABLE IN 26 STANDARD COLORS



EMSHIELD WFR3  
FIRE-RETARDANT  
IMPREGNATED FOAM

FACTORY-APPLIED AND CURED  
INTUMESCENT FACING

MOVEMENT:  $\pm 25\%$  (TOTAL 50%) OF NOMINAL MATERIAL SIZE

EMSEAL'S EMSHIELD WFR3 HAS BEEN TESTED IN ACCORDANCE WITH UL 2079 IN THE CONFIGURATION DEPICTED IN SYSTEM # WW-D-1087. USE OF THIS MATERIAL IN WALL ASSEMBLY CONFIGURATIONS OTHER THAN THAT DEPICTED IN UL SYSTEM # WW-D-1087 WILL NOT ENCUMBER OR LOWER THE RESISTANCE OF THE WALL BUT IS DONE SO AT THE DESIGNERS' DISCRETION AND RESPONSIBILITY FOR DESIGN OF A FIRE RATED WALL ASSEMBLY THAT MEETS APPLICABLE STANDARDS FOR THE PROJECT AND WHICH ADDITIONALLY IS CAPABLE OF RESISTING THE APPROXIMATELY 2.5 PSI (150 LBS PER FOOT OF JOINT BASED ON 5-INCH DEPTH OF SEAL) BACKPRESSURE OF THE WFR3 MATERIAL.

## EMSEAL JOINT SYSTEMS LTD.

### EMSHIELD WFR3 OUTSIDE VERTICAL PLANE UNIVERSAL-90

THIS DOCUMENT CONTAINS INFORMATION OF A CONFIDENTIAL NATURE UNAVAILABLE TO THE PUBLIC AND IS PROPRIETARY TO EMSEAL CORPORATION. ANY UNAUTHORIZED USE WILL BE PROSECUTED. THIS DRAWING IS PROTECTED BY COPYRIGHT, THE RIGHT TO REPRODUCE IN ANY FORM BEING THE EXCLUSIVE RIGHT OF EMSEAL CORPORATION. ANY UNAUTHORIZED REPRODUCTION WHETHER IN TWO OR THREE DIMENSIONS WILL BE PROSECUTED.

DRAWN BY: TAB	DATE: 2011/02/07	SCALE: N.T.S.	SHEET No: 1 OF 1
------------------	---------------------	------------------	---------------------

PART NUMBER:  
EMSHIELD WFR3 3 IN - OUTSIDE VERTICAL U-90 - 001