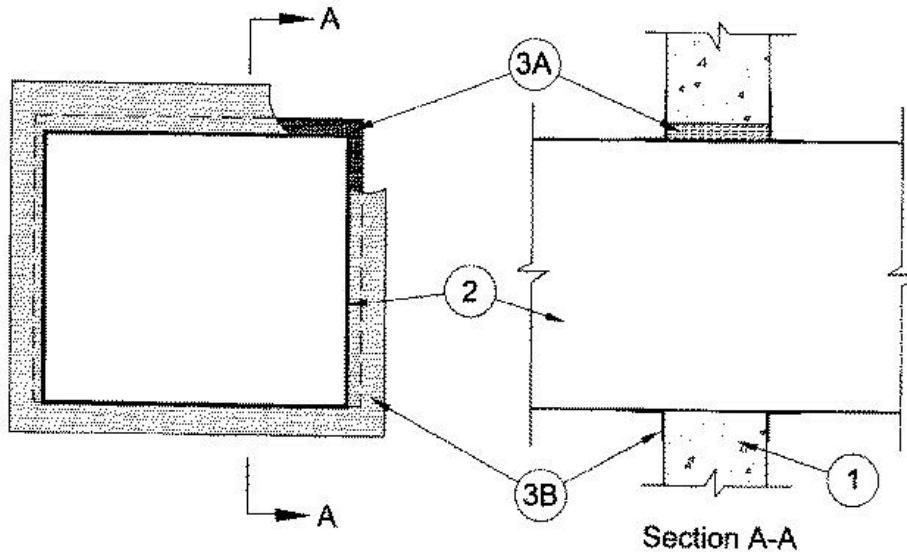


F Rating — 2 Hr
T Rating — 0 Hr



1. **Wall Assembly** — Min 6 in. thick reinforced lightweight or normal weight (100-150 pcf) concrete. Wall may also be constructed of any UL Classified **Concrete Blocks***. Max size of opening is 576 sq in. with a max dimension of 24 in.
See **Concrete Blocks** (CAZT) category in the Fire Resistance Directory for names of manufacturers.

2. **Steel Duct** — Nom 23 by 23 in. (or smaller) No. 24 gauge (or heavier) steel duct to be installed either concentrically or eccentrically within the opening. The annular space shall be min 0 in. (point contact) to max 1 in. Duct to be rigidly supported on both sides of wall assembly.

3. **Firestop System** — The firestop system shall consist of the following:

A. **Packing Material** — Min 6 in. thickness of min 4 pcf mineral wool batt insulation firmly packed into opening as a permanent form, flush with both surfaces of wall.

B. **Fill Void or Cavity Materials*** — **Caulk** — Min 1/8 in. wet thickness of fill material sprayed or brushed on each side of the wall to completely cover mineral wool packing material and to overlap a min of 2 in. onto wallboard and duct.
RECTORSEAL — [Metacaulk 1200 Spray](#), [Metacaulk 1200 Caulk Grade, MC 150+](#)

*,+ Indicates such products shall bear the UL or cUL Certification Mark for jurisdictions employing the UL or cUL Certification (such as Canada), respectively.

Reprinted from the Online Certifications Directory with permission from UL. ©UL LLC