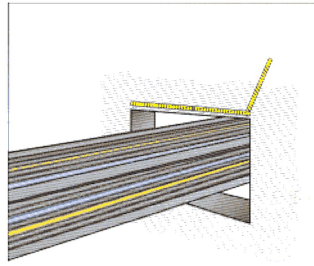
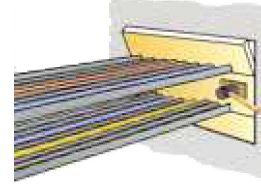


Installation Instructions

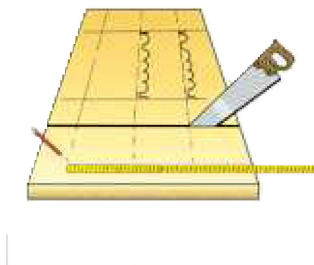
Measure exact location on cables and cable supports, using a meter stick, a mason's compass or a piece of string with which you can locate cables by measuring from the corners.



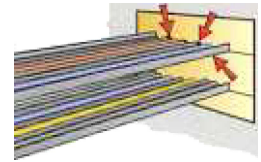
Place one edge of panel first in the opening completely and push it slowly into opening. Since the panel has been cut oversize, a piece of wood and a hammer will be necessary to get panel in place. If panel is loose in the opening, it should be discarded and replaced by a new one.



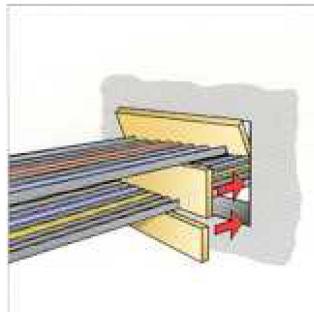
Transfer measurements onto mineral wool panel, but add about 3 mm on height and width of panel cut (this will result in a tighter fit). Now cut panel into as many pieces as necessary to fit in the opening.



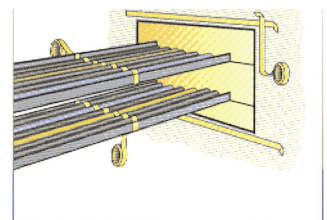
After panel is in place, check carefully for possible openings, stuffing them with loose mineral wool. Apply AVICOAT or Avimastic Intumescent Sealant covering carefully spots stuffed with loose wool, also use AVICOAT or Avimastic Intumescent Sealant liberally between cables and other spots which may allow leakage of fumes and smoke.



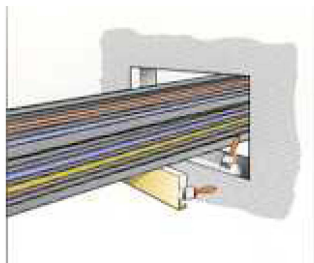
Check cut by placing the panel pieces into the opening and make necessary corrections.



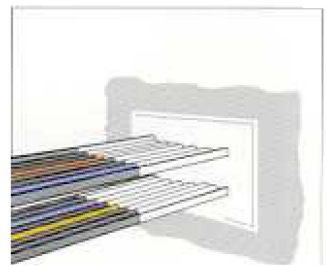
Use masking tape to keep cables and surrounding area on wall or ceiling clean.



Apply AVICOAT to the edges of the panels as well as to the insides of the opening where panels will be fitted. Prior to coating application all areas to be coated have to be cleared of dust, additionally the surface of the building section should be wetted with water.



Now apply AVICOAT by spray or brush, first to panels, then to cables and support systems to distance required by national tests. Coat wall about 2 cm over edge of opening.



Attention:
If walking on a floor penetration is inevitable, use any suitable cover.