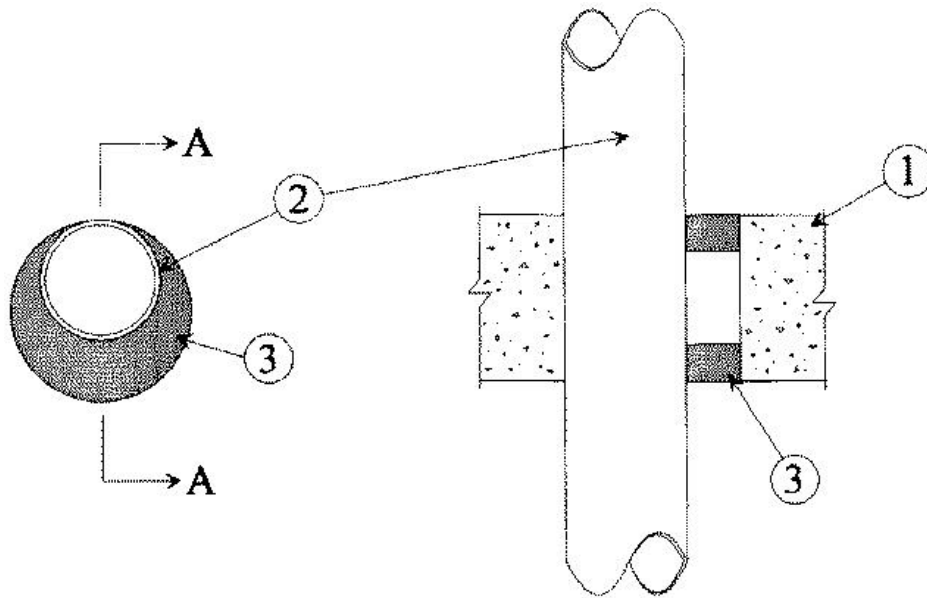


**F Rating — 2 Hr**  
**T Ratings — 0 & 1/4 Hr (See Item 2)**



## SECTION A-A

**1. Floor or Wall Assembly** — Min 4-1/2 in. thick reinforced lightweight or normal weight (100-150 pcf) concrete. Wall may also be constructed of any UL Classified **Concrete Blocks\***. Max diam of opening is 6 in. See **Concrete Blocks** (CAZT) category in the Fire Resistance Directory for names of manufacturers.

**2. Through-Penetrant** — One metallic pipe, conduit or tubing installed either concentrically or eccentrically within the firestop system. The annular space shall be min 0 in. to max 1-1/2 in. Pipe, conduit or tubing to be rigidly supported on both sides of floor or wall assembly. The following types of tubing, pipe or conduit may be used:

A. **Copper Tubing** — Nom 3 in. diam (or smaller) Type L (or heavier) copper tubing.

B. **Copper Pipe** — Nom 3 in. diam (or smaller) Regular (or heavier) copper pipe.

C. **Steel Pipe** — Nom 4 in. diam (or smaller) Schedule 5 (or heavier) steel pipe.

D. **Conduit** — Nom 4 in. diam (or smaller) steel electrical metallic tubing (EMT) or steel conduit.

**T Rating is 1/4 hr Items C and D, 0 hr for Items A and B.**

**3. Fill, Void or Cavity Material\* — Caulk** — Min 1-1/4 in. thickness of fill material applied within the annulus, flush with both surfaces of floor or wall.

**RECTORSEAL** — [Metacaulk 835+](#)

\*,+ Indicates such products shall bear the UL or cUL Certification Mark for jurisdictions employing the UL or cUL Certification (such as Canada), respectively.

Reprinted from the Online Certifications Directory with permission from UL. ©UL LLC