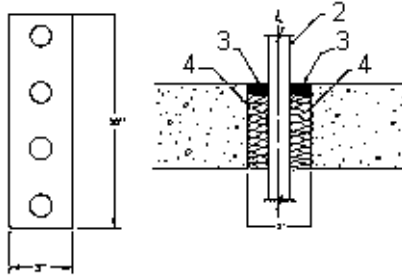


**DESIGN NO. TRC/PH 120-02**  
**HORIZONTAL (FLOOR), F RATING - 2 HRS, T RATING - 4 MINUTES;**  
**ANNULAR SPACING - 1" MAX.**  
**TEST PRESSURE DIFFERENTIAL - 2.5 Pa (0.01" OF WATER) MINIMUM**



Manufacturer's Designation:950 CF-14.

1. Floor: Minimum 4-1/2" thick, normal weight concrete slab with a 10" x 3" opening (either formed or impact-chiseled).
2. Penetrations: Four (4) 1" I.D. Type M Copper Pipes.
3. Caulking Compound or Filler Material: Minimum thickness 1/2" Metalines, Inc. Metacaulk\*950.
4. Insulation: 2-1/2" by 1", minimum 3 pcf mineral wool.

\*Component bearing the Warnock Hersey Certification Mark