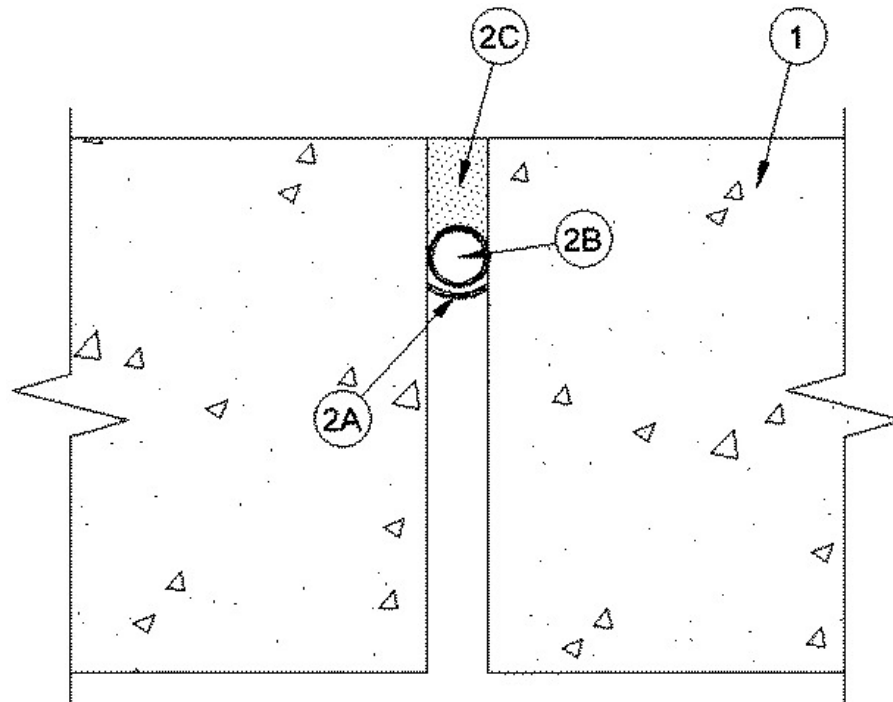


Assembly Rating — 2 Hr
Nominal Joint Width — 1 In.
Class II or III Movement Capabilities — 25% Compression or Extension



1. **Floor Assembly** — Min 4-1/2 in. thick reinforced lightweight or normal weight (100-150 pcf) structural concrete.
 2. **Joint System** — Max width of joint (at time of installation of joint system) is 1 in. The joint system is designed to accommodate a max 25 percent compression or extension from it's installed width. The joint system shall consist of the following:
 - A. **Fill, Void or Cavity Material* — Joint Strip** — Nom 1/16 in. thick by 1-1/2 in. wide strip of intumescent material faced on one side with an elastomeric backing strip. Strip is formed into a "u-shape " along its length and friction fit into joint opening such that the base of the "u" is recessed approximately 1-9/16 in. from the top surface of floor.
RECTORSEAL — [Metacaulk Joint Strip](#)
 - B. **Packing Material** — Foam backer rod firmly packed into opening as a permanent form. Packing material to be recessed from top surface of floor as required to accommodate the required thickness of fill material.
 - C. **Fill, Void or Cavity Material*** — Caulk - Min 1/4 in. thickness of fill material applied within the joint, flush with top surface of floor.
BASF CONSTRUCTION CHEMICAL L L C — Sonolastic NP-1 Caulk
- SIKA CORPORATION** — Sikaflex 2C NS, Sikaflex 1-A

*,+ Indicates such products shall bear the UL or cUL Certification Mark for jurisdictions employing the UL or cUL Certification (such as Canada), respectively.

Reprinted from the Online Certifications Directory with permission from UL. ©UL LLC