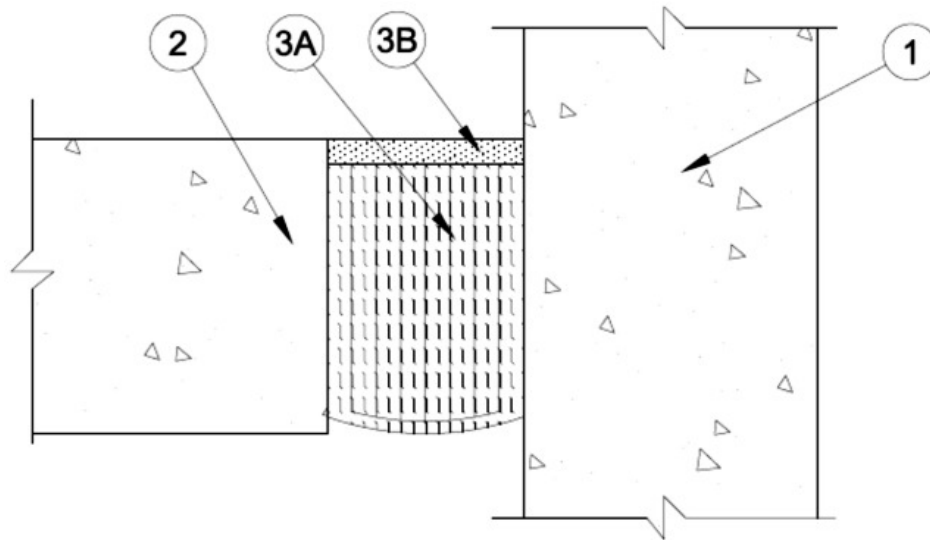


Assembly Rating — 2 Hr
Joint Width — 4 In. Max



1. **Wall Assembly** — Min 4-1/2 in. (114 mm) thick reinforced lightweight or normal weight (100-150 pcf or 1600-2400 kg/m³) structural concrete. Wall may also be constructed of any UL Classified **Concrete Blocks***.
See **Concrete Blocks** (CAZT) category in the Fire Resistance Directory for names of manufacturers.
2. **Floor Assembly** — Min 4-1/2 in. (114 mm) thick steel-reinforced lightweight or normal weight (100-150 pcf or 1600-2400 kg/m³) structural concrete.
3. **Joint System** — Max separation between edge of floor and face of wall is 4 in. (102 mm). The joint system shall consist of the following:
 - A. **Forming Material*** — Min 11 in. (279 mm) width of forming material folded in half, compressed min 40 percent in thickness and friction fitted into opening as a permanent form. Forming material to be recessed from top surface of floor to accommodate the required thickness of fill material.
BACKER ROD MFG INC — ULTRA BLOCK®
 - B. **Fill, Void or Cavity Material* - Sealant** — Min 1/2 in. (13 mm) thickness of fill material applied within the joint, flush with top surface of floor.
RECTORSEAL — FS4000 Sealant, [Metacaulk 835+](#), Biotherm 100

*,+ Indicates such products shall bear the UL or cUL Certification Mark for jurisdictions employing the UL or cUL Certification (such as Canada), respectively.

Reprinted from the Online Certifications Directory with permission from UL. ©UL LLC