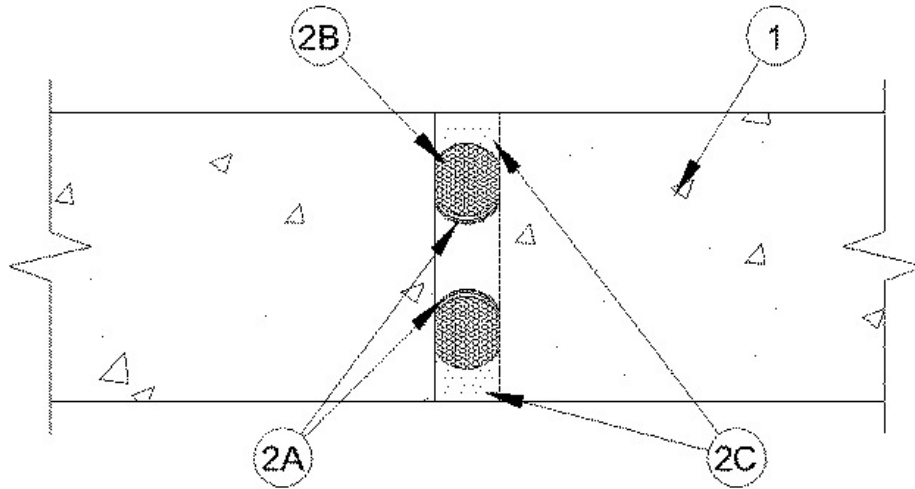


**Assembly Rating — 4 Hr**  
**Joint Width—1 In. Max**  
**Class II and III Movement Capabilities - 25% Compression and Extension**



1. **Wall Assembly** — Min 6 in. thick reinforced lightweight or normal weight (100-150 pcf) structural concrete. Wall may also be constructed of any UL Classified **Concrete Blocks\***.

See **Concrete Blocks** (CAZT) category in the Fire Resistance Directory for names of manufacturers.

2. **Joint System** — Max width of joint is 1 in. The joint system shall consist of the following:

A. **Fill, Void or Cavity Material\*** — Nom 1/16 in. thick by 1-1/2 in. wide strips of intumescent material faced on one side with an elastomeric backing strip. Strips are formed into a "u-shape" along its length and friction fit into joint opening such that the base of the "u" is recessed approximately 1-11/16 in. from each surface of wall. 1/16 in. thick by 1 in. wide intumescent strips may be used in max 3/4 in. wide joints in the same manner as above.

**RECTORSEAL** — [Metacaulk Joint Strip](#)

B. **Packing Material** — Foam backer rod firmly packed into opening as a permanent form. Packing material to be recessed from each surface of wall as required to accommodate the required thickness of fill material.

C. **Fill, Void or Cavity Material\*** — Min 1/4 in. thickness of fill material applied within the joint, flush with each surface of wall.

**BASF CONSTRUCTION CHEMICAL L L C** — Sonolastic NP-1 Caulk

**SIKA CORPORATION** — Sikaflex 2C NS, Sikaflex 1-A

\*,+ Indicates such products shall bear the UL or cUL Certification Mark for jurisdictions employing the UL or cUL Certification (such as Canada), respectively.

Reprinted from the Online Certifications Directory with permission from UL. ©UL LLC