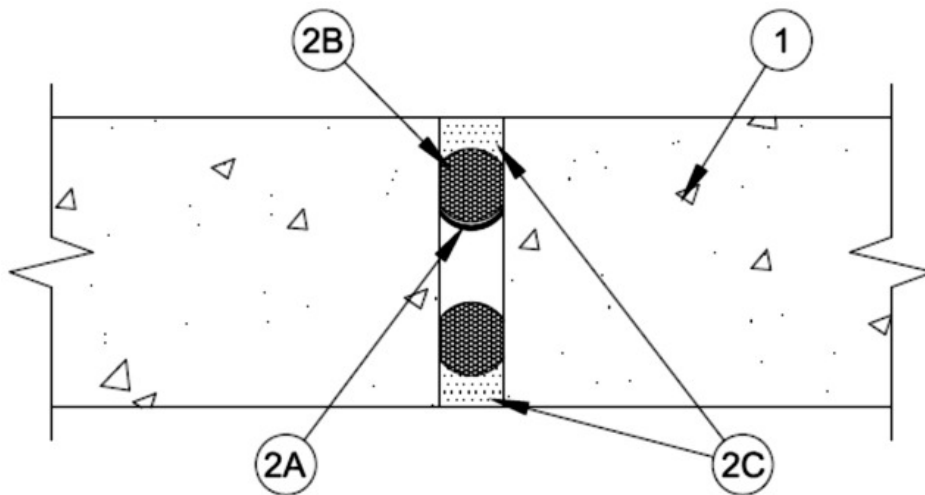


Assembly Rating — 3 Hr
Nominal Joint Width — 2 In.
Class II and III Movement Capabilities — 25% Compression and Extension



1. **Wall Assembly** — Min 6 in. (152mm) thick reinforced lightweight or normal weight (100-150 pcf, 1600-2400 kg/m³) structural concrete. Wall may also be constructed of any UL Classified **Concrete Blocks***.

See **Concrete Blocks** (CAZT) category in the Fire Resistance Directory for names of manufacturers.

2. **Joint System** — Max width of joint is 2 in. (51 mm) The joint system shall consist of the following:

A. **Fill, Void or Cavity Material*** — Nom 1/16 in (1.6 mm) thick by 3 in. (76 mm) wide strip of intumescent material faced on one side with an elastomeric backing strip. Strip is formed into a "u-shape" along its length prior to insertion into joint. Joint strip is to be positioned approximately mid width of wall. Packing material is then to be inserted into the opening and recessed to accommodate the thickness of sealant (Item 2C) on both sides of the wall.

RECTORSEAL — [Metacaulk Joint Strip](#)

B. **Packing Material** — Foam backer rod firmly packed into opening as a permanent form. Packing material to be recessed from each surface of wall as required to accommodate the required thickness of fill material. Backer rod is to be 1 in (25 mm) nominal diam greater than the nominal joint width.

C. **Fill, Void or Cavity Material*** — Min 1/2 in. (13 mm) thickness of fill material applied within the joint, flush with each surface of wall.

BASF CONSTRUCTION CHEMICAL L L C — Sonolastic NP-1 Caulk

SIKA CORPORATION — Sikaflex 2C NS

RECTORSEAL — [Metacaulk 150+](#), 835+, 1000, 1100, 1200, FS900+, FS 1900, Biostop 750, FlameSafe FS3000, FS4000

*,+ Indicates such products shall bear the UL or cUL Certification Mark for jurisdictions employing the UL or cUL Certification (such as Canada), respectively.

Reprinted from the Online Certifications Directory with permission from UL. ©UL LLC