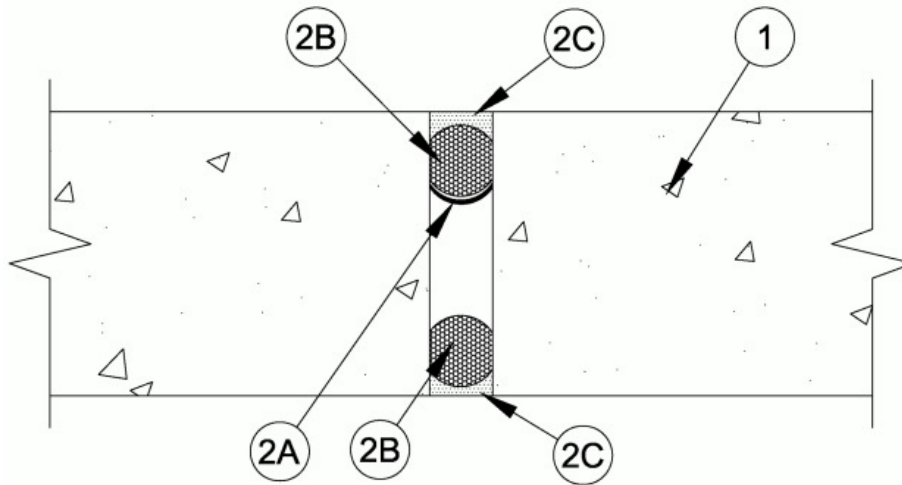


Assembly Rating — 3 and 4 Hr (See Item 2)
Nominal Joint Width — 2 In.
Class II and III Movement Capabilities — 15% Compression and Extension



1. Wall Assembly — Min 6 in. (152mm) thick reinforced lightweight or normal weight (100-150 pcf or 1600-2400 kg/m³) structural concrete. Wall may also be constructed of any UL Classified **Concrete Blocks***.
 See **Concrete Blocks** (CAZT) category in the Fire Resistance Directory for names of manufacturers.

2. Joint System — Max separation between wall assemblies (at time of installation of joint system) is 2 in. (51 mm) for 3 hr rated assemblies and 1-1/2 in. (38 mm) for 4 hr rated assemblies. The joint system is designed to accommodate a max 15 percent compression or extension from its installed width. The joint system shall consist of the following:

A. Fill, Void or Cavity Material* — Nom 0.08 in. (2 mm) thick strips of intumescent material faced on one side with an elastomeric backing strip. Strip is formed into a "U-shape" along its length and friction fit into joint opening. For nom 1-1/4 to 2 in. (32 to 51 mm) wide joint openings, strip installed such that the base of the "U" is recessed to accommodate the packing material (Item 3B) and the required thickness of fill material (Item 3B) from one surface (either side) of wall. For nom 1/4 to 1 in. (6 to 25 mm) wide joint openings, strip installed at approximate mid-depth of wall. The required joint strip width for the various joint widths is shown in the following table:

Nom Joint Width, In. (mm)	Joint Strip Width, In. (mm)	Assembly Rating, Hr
1/4 to 3/8 (6-10)	3/4 (19)	3
1/2 to 5/8 (13-16)	1 (25)	3
3/4 to 1 (19-25)	1-1/2 (38)	3
1-1/4 to 1-1/2 (32-38)	2-1/2 (64)	3
1-3/4 to 2 (45-51)	3 (76)	3
1-1/2 (38)	2-1/2 (64)	4

RECTORSEAL — [Metacaulk Joint Strip](#), Biostop Joint Strip or FlameSafe Joint Strip

B. Packing Material — Foam backer rod firmly packed into opening as a permanent form. Packing material to be recessed from each surface of wall to accommodate the required thickness of fill material.

C. Fill, Void or Cavity Material* — Min 1/4 in. (6 mm) thickness of fill material applied within the joint, flush with each

surface of wall.

RECTORSEAL — [Metacaulk 1000, 150+](#), 350i, 835+, 1200, Biostop 500+, [150+](#), 350i, 100, 800, 750, FlameSafe 900+, 1900, 4000.

BASF CONSTRUCTION CHEMICAL L L C — MasterSeal NP1 Sealant or Sonolastic NP-2

SIKA CORPORATION — Sikaflex 2C NS

PECORA CORP — Dynatrol II

*,+ Indicates such products shall bear the UL or cUL Certification Mark for jurisdictions employing the UL or cUL Certification (such as Canada), respectively.

Reprinted from the Online Certifications Directory with permission from UL. ©UL LLC