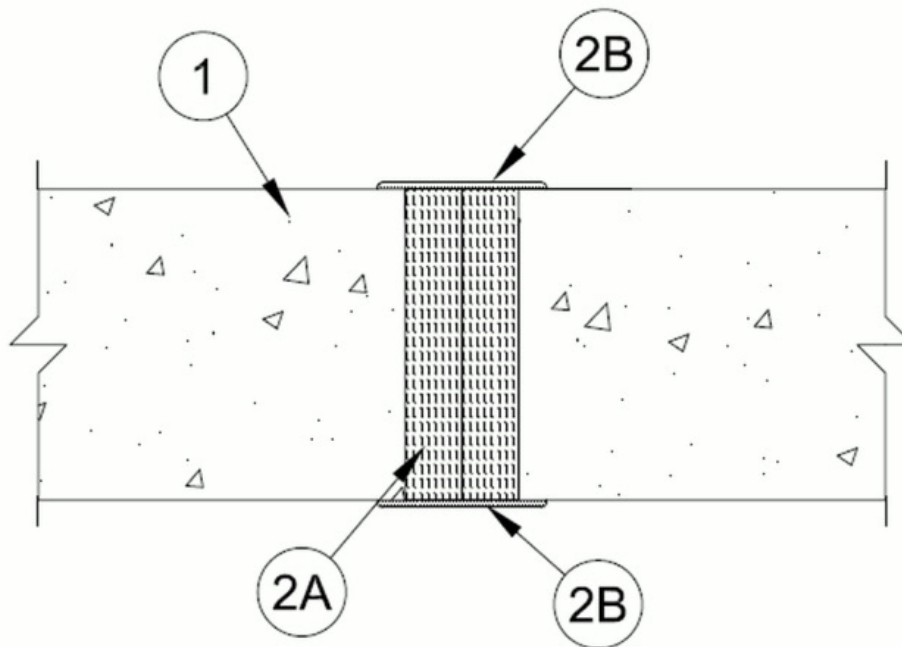


ANSI/UL2079	CAN/ULC S115
Assembly Rating — 3 Hr	F Rating — 3 Hr
Nominal Joint Width - 2 In.	FT Rating — 3 Hr
Class II Movement Capabilities — 15% Compression or Extension	FH Rating — 3 Hr
L Rating At Ambient — Less Than 1 CFM/Lin Ft	FTH Rating — 3 Hr
L Rating At 400 F — Less Than 1 CFM/Lin Ft	Nominal Joint Width - 2 In.
	Class II Movement Capabilities — 15% Compression or Extension
	L Rating At Ambient — Less Than 1 CFM/Lin Ft
	L Rating At 400 F — Less Than 1 CFM/Lin Ft



1. **Wall Assembly** — Min 5-7/8 in. (149 mm) thick reinforced lightweight or normal weight (100-150 pcf or 1600-2400 kg/m<sup>3</sup>) structural concrete. Min 3 hr fire rated U900 Series wall may also be constructed of UL Classified **Concrete Blocks**\*. See **Concrete Blocks** (CAZT) category in the Fire Resistance Directory for names of manufacturers.

2. **Joint System** — Max width of joint (at time of installation of joint system) is 2 in. (51 mm). The joint system is designed to accommodate a max 15 percent compression or extension from its installed width. The joint system shall consist of the following:

A. **Forming Material\*** (XHKU) — Min 4 pcf (64 kg/m<sup>3</sup>) mineral wool batt insulation installed in joint opening as a permanent form. Pieces of batt cut to width equal to thickness of wall. Pieces of batt installed edge-first into joint opening, parallel with joint direction, such that batt sections are compressed min 50 percent in thickness and such that the compressed batt sections are flush with both surfaces of wall.

**ROCK WOOL MANUFACTURING CO** — Delta Board

**ROCKWOOL MALAYSIA SDN BHD** — SAFE

**ROCKWOOL** — SAFE

B. **Fill, Void or Cavity Material\*** (XHHW) — Min 1/8 in. (3 mm) wet thickness (1/16 in. or 1.6 mm dry thickness) of fill

---

material applied over the forming material on both surfaces of wall. Sealant installed with a min 1/2 in. (13 mm) overlap onto wall surfaces on both sides of joint on both sides of wall.

**RECTORSEAL** — Biostop BF [150+ Caulk](#), Biostop 750 Spray, Biostop 800 Spray, [Metacaulk 150+ Caulk](#), [Metacaulk 1200](#) Spray, [Metacaulk 1500](#) Spray, FlameSafe FS3000 Spray

\*,+ Indicates such products shall bear the UL or cUL Certification Mark for jurisdictions employing the UL or cUL Certification (such as Canada), respectively.

Reprinted from the Online Certifications Directory with permission from UL. ©UL LLC