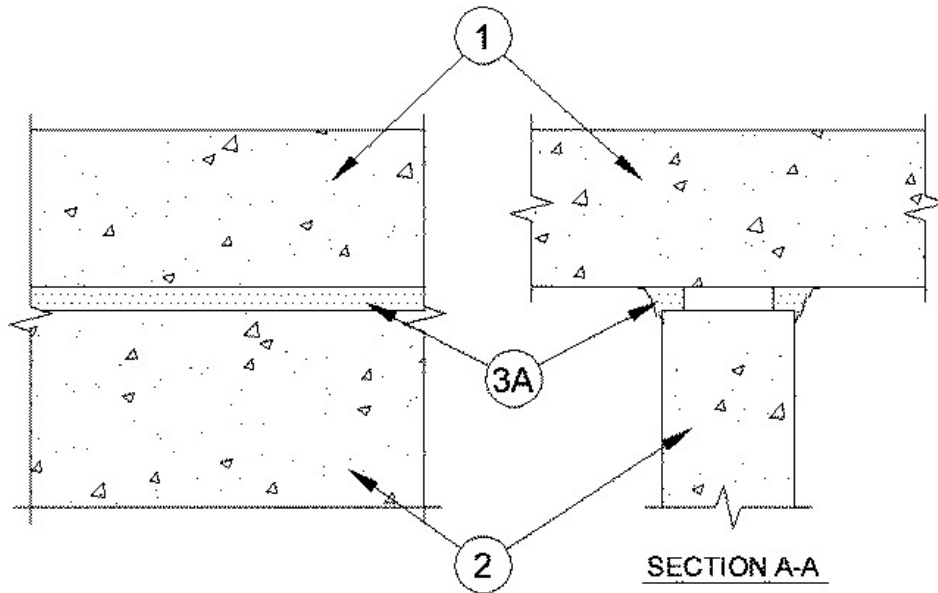


**Assembly Rating — 2 Hr**  
**Nominal Joint Width - 3/4 in.**  
**Class II and III Movement Capabilities - 20% Compression and Extension**



1. **Floor Assembly** — Min 4-1/2 in. thick reinforced lightweight or normal weight (100-150 pcf) structural concrete.
2. **Wall Assembly** — Min 6 in. thick reinforced lightweight or normal weight (100-150 pcf) structural concrete. Wall may also be constructed of any UL Classified **Concrete Blocks\***.  
 See **Concrete Blocks** (CAZT) category in the Fire Resistance Directory for names of manufacturers.
3. **Joint System** — **Max width of joint (at time of joint system installation) is 3/4 in. The joint system is designed to accommodate a max 20 percent compression or expansion from it's installed width.** The joint system shall consist of the following:
  - A. **Fill, Void or Cavity Material\* - Caulk \*** — Min 5/8 in. thickness of fill material troweled on each side of the wall flush with wall and floor surfaces.  
**RECTORSEAL** — MC 150+ Caulk, Metacaulk 1200 Caulk

\*,+ Indicates such products shall bear the UL or cUL Certification Mark for jurisdictions employing the UL or cUL Certification (such as Canada), respectively.

Reprinted from the Online Certifications Directory with permission from UL. ©UL LLC