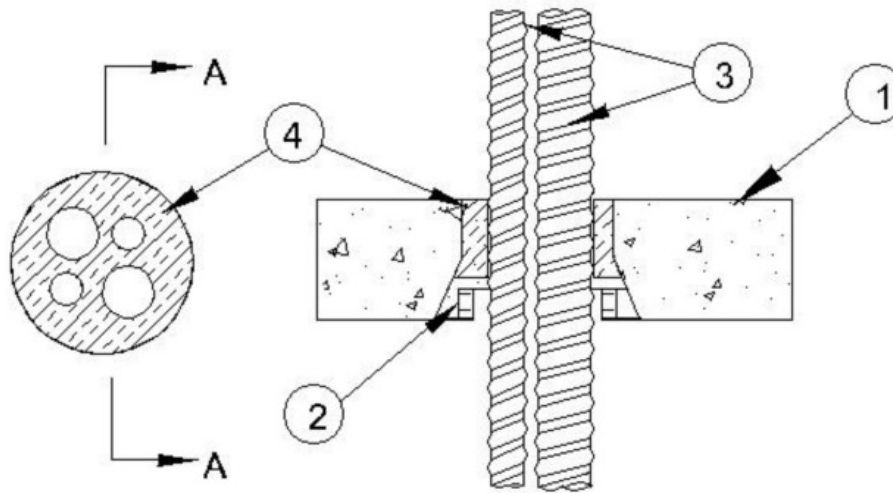


F Rating — 2 Hr
T Rating — 2 Hr



Section A-A

- 1. Floor Assembly** — Min 4-1/2 in. (114 mm) thick reinforced lightweight or normal weight (100-150 pcf or 1600-2400 kg/m³) concrete.
- 2. Firestop Devices*** — Nom 4 in. (102 mm) diam cast in place firestop device permanently embedded during concrete placement in accordance with accompanying installation instructions. The device may project up to a max of 3-1/2 in. (89 mm) above top surface of floor or trimmed flush with top surface of floor.
RECTORSEAL — [Metacaulk Cast -in- Place Firestop Device](#)
- 3. Through Penetrants** — Max four flexible metallic conduits or flexible metallic pipes (closed piping system) to be installed eccentrically or concentrically within the firestop system. Conduit or piping to be aluminum or steel and max 1 1/2 in (38 mm) diam. A min 1/2 in. (13 mm) annular space shall be maintained between the penetrant and the inside of the device.
- 4. Packing Material** — Min 3 in. (76 mm) thickness of min 4 pcf (64 kg/m³) mineral wool batt insulation firmly packed into the annular space between the penetrant and device as a permanent form, flush with the top surface of the floor.

*,+ Indicates such products shall bear the UL or cUL Certification Mark for jurisdictions employing the UL or cUL Certification (such as Canada), respectively.

Reprinted from the Online Certifications Directory with permission from UL. ©UL LLC