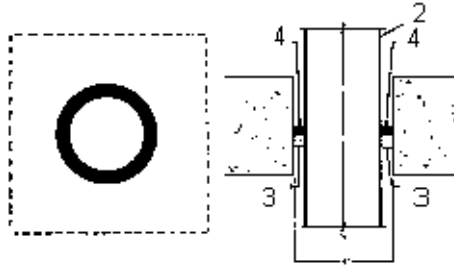


DESIGN NO. TRC/PHV 120-03
HORIZONTAL OR VERTICAL (FLOOR OR WALL), F & T RATINGS - 2 HRS;
ANNULAR SPACING - 3/4" MAX.
TEST PRESSURE DIFFERENTIAL - 2.5 Pa (0.01" OF WATER) MINIMUM



Manufacturer's Designation: 950 CF-16 (Floor); 950 CW-16 (Wall).

1. Floor or Wall: Minimum 6" thick, standard weight concrete with a 3" diameter opening (either formed or impact-chiseled).
2. Penetrations: One 1" (Nominal) diameter, Black Steel Pipe with a 1/2" (Nominal) thick layer of non-combustible insulation wrapped around it (Total Pipe + Insulation Wrap diameter = 2" Nominal).
3. Insulation: Foam Backer Rod.
4. Caulking Compound or Filler Material: Minimum thickness 1/2" Metalines, Inc. Metacaulk*950.

*Component bearing the Warnock Hersey Certification Mark