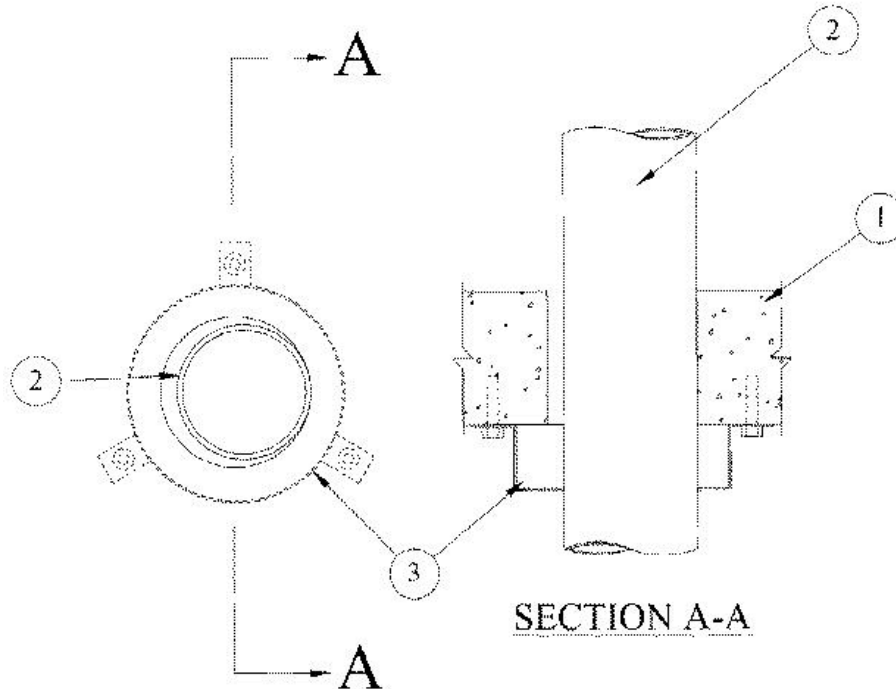


F Rating — 3 Hr  
T Rating — 3 Hr



1. **Floor or Wall Assembly** — Min 4-1/2 in. (114 mm) thick reinforced lightweight or normal weight (100-150 pcf or 1600-2400 kg/m<sup>3</sup>) concrete. Wall may also be constructed of any UL Classified **Concrete Blocks**\*. Floor may also be constructed of any min 6 in. (152 mm) thick UL Classified hollow-core **Precast Concrete Units**\*. Max diam of opening is 5 in. (127 mm). See **Concrete Blocks** (CAZT) and **Precast Concrete Units** (CFTV) categories in the Fire Resistance Directory for names of manufacturers.

2. **Through Penetrants** — One nonmetallic pipe to be installed within the firestop system. The annular space shall be min point contact 0 in. to max 1/2 in. (13 mm) Pipe to be rigidly supported on both sides of floor or wall assembly. The following types and sizes of nonmetallic pipes may be used:

A. **Polyvinyl Chloride (PVC or uPVC) Pipe** — Nom 4 in. (102 mm) diam (or smaller) Schedule 40 solid or cellular core PVC or uPVC pipe for use in closed (process or supply) or vented (drain, waste or vent) piping systems.

C. **Chlorinated Polyvinyl Chloride (CPVC) Pipe** — Nom 4 in. (102 mm) diam (or smaller) SDR 17 or Schedule 40 CPVC pipe for use in closed (process or supply) or vented (drain, waste or vent) piping systems. When pipe collars are provided on both sides of a wall, SDR 17 or Schedule 40 CPVC pipe may also be used in vented (drain, waste or vent) piping systems.

D. **Acrylonitrile Butadiene Styrene (ABS) Pipe** — Nom 4 in. (102 mm) diam (or smaller) Schedule 40 solid or cellular core pipe for use in closed (process or supply) or vented (drain, waste or vent) piping systems.

3. **Firestop Device\*** — Galv steel collar lined with an intumescent material sized to fit specific diam of the through penetrant. Device to be installed around through penetrant in accordance with accompanying installation instructions. Device incorporates anchor tabs for securement to bottom surface of floor or both surfaces of wall by means of 1/4 in. (6 mm) by 1-1/4 in. (32 mm). Tapcon concrete anchors.

**RECTORSEAL** — [Metacaulk Pipe Collar](#)

\* Indicates such products shall bear the UL or cUL Certification Mark for jurisdictions employing the UL or cUL Certification (such as Canada), respectively.