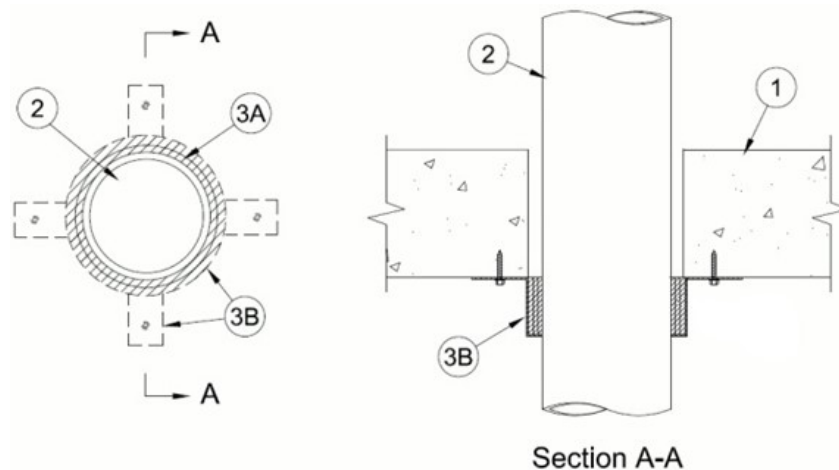


September 04, 2024

CAN/ULC S115
F Rating — 2 Hr
FT Rating — 1 Hr
FH Rating — 0 Hr
FTH Rating — 0 Hr
L Rating At Ambient — Less Than 5.1 L/s/m² (See Item 3A)
L Rating At 204°C — Less Than 5.1 L/s/m² (See Item 3A)



System tested with a pressure differential of 50 Pa between the exposed and the unexposed surfaces with the higher pressure on the exposed side. (See Item 2)

1. Floor or Wall Assembly — Min 114 mm (4-1/2 in.) thick reinforced lightweight or normal weight (1600-2400 kg/ m³ or 100-150 pcf) concrete for 2 hr F Rated assemblies, respectively. Wall may also be constructed of any UL Classified Concrete Blocks*. Floor may also be constructed of any min 152 mm (6 in.) thick UL Classified hollow core Precast Concrete Units*. Max diam of opening in Precast Concrete Units is 178 mm (7 in.). Max diam of opening is dependent upon the type of penetrant, nom diam of penetrant and the max annular space within opening as shown in Item 2.

See **Concrete Blocks** (CAZT) and **Precast Concrete Units** (CFTV) categories in the Fire Resistance Directory for names of manufactures.

2. Through Penetrant — One nonmetallic penetrant to be installed either concentrically or eccentrically within the firestop system. The min annular space between penetrant and periphery of opening shall be 0 mm (point contact). The max annular space required between penetrant periphery of opening is shown in the table below. Penetrant to be rigidly supported on both sides of floor or wall assembly. The following types and sizes of nonmetallic penetrants may be used:

A. Polyvinyl Chloride (PVC or uPVC) Pipe—Nom 152 mm (6 in.) diam (or smaller) Schedule 40 solid core or cellular core PVC or uPVC pipe for use in closed (process or supply) or vented (drain, waste or vent) piping system.

B. Chlorinated Polyvinyl Chloride (CPVC) Pipe—Nom 152 mm (6 in.) diam (or smaller) SDR11 or SDR13.5 CPVC pipe for use in closed (process or supply) piping systems.

C. Chlorinated Polyvinyl Chloride (CPVC) Pipe— Nom 152 mm (6 in.) diam (or smaller) IPEX Aquarise SDR 11 CPVC for use in closed (process or supply) piping systems.

D. Polyvinyl Chloride-XFR (PVC-XFR) Pipe—Nom 152 mm (6 in.) diam (or smaller) Schedule 40 solid core PVC pipe for use in closed (process or supply) or vented (drain, waste, or vent) piping systems.

E. Rigid Nonmetallic Conduit+ —Nom 102mm (4 in.) diam (or smaller) Schedule 40 PVC conduit installed in accordance with the National Electrical Code (NFPA No. 70).

F. Chlorinated Polyvinyl Chloride (CPVC) Pipe— Nom 152 mm (6 in.) diam (or smaller) IPEX Aquarise SDR 21 CPVC for use in closed (process or supply) or vented (drain, waste, or vent) piping systems.

Penetrant Item	Nom Pipe Diam, mm (in.)	Max Diam of Opening, mm (in.)	Max Annular Space, mm (in.)
A, B, C, D, E, F	38 (1-1/2)	54 (2-1/8)	5 (3/16)
A, B, C, D, E, F	51 (2)	67 (2-5/8)	6 (1/4)
A, B, C, D, E, F	76 (3)	102 (4)	13 (1/2)
A, B, C, D, E, F	102 (4)	127 (5)	13 (1/2)
A, B, C, D, F	152 (6)	178 (7)	13 (1/2)

3. Firestop System —The firestop system shall consist of the following:

A. Fill, Void or Cavity Material* — Caulk (Optional)— Min 6 mm (1/4 in.) thickness of fill material applied within the annulus, flush with top or bottom surface of floor or with both surfaces of wall assembly. L Rating applies only when [Metacaulk 150+](#), [Metacaulk 1000](#) and [Metacaulk 1200](#) is used either on top or bottom of the floor or with both surfaces of wall assembly.

RECTORSEAL — [Metacaulk 1000](#), [Metacaulk 150+](#), [Metacaulk 1200](#)

B. Firestop Device* —Galv steel collar lined with an intumescent material sized to fit specific diam of the through penetrant. Device to be installed around through penetrant in accordance with accompanying installation instructions. Device incorporates anchor tabs for securement to underside of the concrete floor by means of 6 mm (1/4 in.) diam by 32 mm (1-1/4 in.) long steel expansion bolts or steel Tapcon® concrete screw anchors in conjunction with min 19 mm (3/4 in.) diam washers. Device secured at each tab. In walls, collars are installed on each side of wall.

RECTORSEAL — [Metacaulk Pipe Collar](#)

* Indicates such products shall bear the UL or cUL Certification Mark for jurisdictions employing the UL or cUL Certification (such as Canada), respectively.