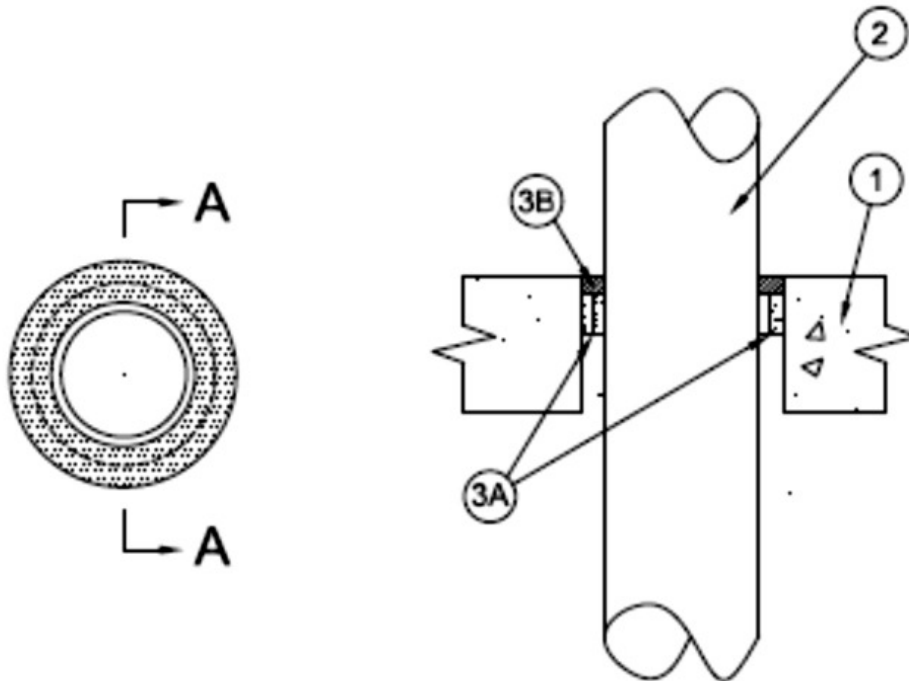


F Rating — 2 Hr
 T Rating — 2 Hr
 L Rating at Ambient — Less than 1 CFM/ft²
 L Rating at 400° F — Less than 1 CFM/ft²



1. **Floor Assembly** — Min 4-1/2 in. (114 mm) thick lightweight or normal weight (100-150 pcf or 1600-2400 kg/m³) concrete. Wall may also be constructed of any UL Classified **Concrete Blocks***. Floor may also be constructed of any min 6 in. (152 mm) thick UL Classified hollow-core **Precast Concrete Units***. Max diam of opening 5 in. (127 mm).

See **Concrete Blocks** (CAZT) and **Precast Concrete Units** (CFTV) categories in the Fire Resistance Directory for names or manufacturers.

2. **Through Penetrant** — One nonmetallic penetrant installed concentrically within the firestop system. The annular space between pipe and periphery of opening shall be 1/4 in. (6mm) to 1-1/4 in. (32 mm). Pipe to be rigidly supported on both sides of the floor assembly. The following types and sizes of nonmetallic pipes may be used:

A. **Polyvinyl Chloride (PVC) Pipe** — Nom 3 in. (76 mm) diam (or smaller) Schedule 40 (or heavier) solid core or cellular core PVC pipe for use in closed (process or supply) or vented (drain, waste or vent) piping systems.

B. **Chlorinated Polyvinyl Chloride (CPVC) Pipe** — Nom 3 in. (76 mm) diam (or smaller) SDR 13.5 CPVC pipe for use in closed (process or supply) piping systems.

3. **Firestop System** — The firestop system shall consist of the following:

A. **Fill, Void or Cavity Materials* —Wrap Strip** — One layer of nom 1/4 in. (6 mm) thick by 2 in. (51 mm) wide intumescent elastomeric material faced on one side with a plastic film,. Wrap strips individually wrapped around nonmetallic pipe (film side exposed) with ends butted and held in place with tape or tie wire. Butted ends in successive layers shall be offset. Wrap strip recessed 1/2 in. (13 mm) from top surface of floor or both sides of wall.

RECTORSEAL — [Metacaulk Wrap Strip](#), Biostop Wrap Strip, FlameSafe Wrap Strip

B. **Fill, Void or Cavity Material —Caulk** — Min 1/2 in. (13 mm) thickness of sealant applied within the annulus, flush with top surface of steel deck or concrete floor.

RECTORSEAL — [Metacaulk 1000](#), Biostop 500+, FlameSafe 1900

*,+ Indicates such products shall bear the UL or cUL Certification Mark for jurisdictions employing the UL or cUL Certification (such as Canada), respectively.